

For Research Use Only

# GAS2 Polyclonal antibody

Catalog Number: 11941-2-AP **1 Publications**



## Basic Information

<b>Catalog Number:</b> 11941-2-AP	<b>GenBank Accession Number:</b> BC040470	<b>Purification Method:</b> Antigen affinity purification
<b>Size:</b> 600 µg/ml	<b>GeneID (NCBI):</b> 2620	<b>Recommended Dilutions:</b> WB 1:500-1:2400 IHC 1:50-1:500
<b>Source:</b> Rabbit	<b>UNIPROT ID:</b> O43903	
<b>Isotype:</b> IgG	<b>Full Name:</b> growth arrest-specific 2	
<b>Immunogen Catalog Number:</b> AG2540	<b>Calculated MW:</b> 313 aa, 35 kDa	
	<b>Observed MW:</b> 35 kDa	

## Applications

<b>Tested Applications:</b> IHC, WB, ELISA	<b>Positive Controls:</b> WB : human kidney tissue, HuH-7 cells, human liver tissue, Jurkat cells, mouse liver tissue IHC : human lung cancer tissue,
<b>Cited Applications:</b> WB	
<b>Species Specificity:</b> human, mouse, rat	
<b>Cited Species:</b> human	
<b>Note-IHC: suggested antigen retrieval with TE buffer pH 9.0; (*) Alternatively, antigen retrieval may be performed with citrate buffer pH 6.0</b>	

## Background Information

### Notable Publications

Author	Pubmed ID	Journal	Application
WeiQi Huang	28881589	Oncotarget	WB

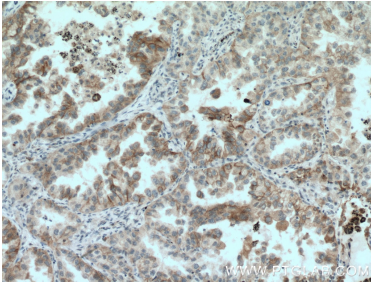
## Storage

**Storage:**  
Store at -20°C. Stable for one year after shipment.  
**Storage Buffer:**  
PBS with 0.02% sodium azide and 50% glycerol pH 7.3.  
Aliquoting is unnecessary for -20°C storage

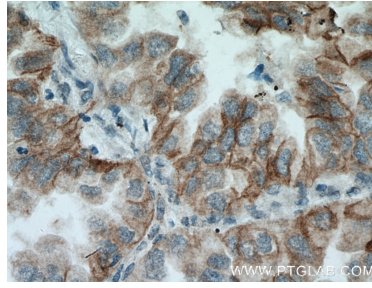
For technical support and original validation data for this product please contact:  
T: 4006900926 E: Proteintech-CN@ptglab.com W: ptgcn.com

This product is exclusively available under Proteintech Group brand and is not available to purchase from any other manufacturer.

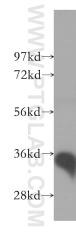
## Selected Validation Data



Immunohistochemical analysis of paraffin-embedded human lung cancer tissue slide using 11941-2-AP (GAS2 antibody) at dilution of 1:200 (under 10x lens. Heat mediated antigen retrieval with Tris-EDTA buffer (pH 9.0).



Immunohistochemical analysis of paraffin-embedded human lung cancer tissue slide using 11941-2-AP (GAS2 antibody) at dilution of 1:200 (under 40x lens. Heat mediated antigen retrieval with Tris-EDTA buffer (pH 9.0).



human kidney tissue were subjected to SDS PAGE followed by western blot with 11941-2-AP (GAS2 antibody) at dilution of 1:500 incubated at room temperature for 1.5 hours.