

For Research Use Only

COMMD1 Polyclonal antibody

Catalog Number: 11938-1-AP

Featured Product

23 Publications



Basic Information

Catalog Number:

11938-1-AP

Size:

600 µg/ml

Source:

Rabbit

Isotype:

IgG

Immunogen Catalog Number:

AG2535

GenBank Accession Number:

BC022046

GeneID (NCBI):

150684

UNIPROT ID:

Q8N668

Full Name:

copper metabolism (Murr1) domain containing 1

Calculated MW:

190 aa, 21 kDa

Observed MW:

21 kDa

Purification Method:

Antigen affinity purification

Recommended Dilutions:

WB 1:500-1:2000

IP 0.5-4.0 µg for 1.0-3.0 mg of total protein lysate

IHC 1:50-1:500

IF/ICC 1:50-1:500

Applications

Tested Applications:

WB, IHC, IF/ICC, IP, ELISA

Cited Applications:

WB, IHC, IF, CoIP

Species Specificity:

human, mouse, rat

Cited Species:

human, mouse, rat, canine

Positive Controls:

WB : HeLa cells, HepG2 cells, mouse brain tissue, rat brain tissue

IP : mouse brain tissue,

IHC : human liver cancer tissue,

IF/ICC : HepG2 cells,

Note-IHC: suggested antigen retrieval with TE buffer pH 9.0; (*) Alternatively, antigen retrieval may be performed with citrate buffer pH 6.0

Background Information

COMMD1 (COMM domain-containing protein 1), also named MURR1, is implicated in copper homeostasis by binding one copper ion per monomer. COMMD1 was reported to accelerate the ubiquitination and degradation of NF-κB subunits, its deficiency exerts enhanced NF-κB mediated cellular response. Ubiquitinated by XIAP (X-linked inhibitor of apoptosis), COMMD1 undergoes proteasomal degradation. SOD1 activity can be downregulated by COMMD1.

Notable Publications

Author	Pubmed ID	Journal	Application
Alina Fedoseienko	27788210	PLoS One	WB, IHC
D-W Yeh	26586569	Cell Death Differ	WB
Drévilon Loïc L	21483833	PLoS One	WB, IF

Storage

Storage:

Store at -20°C. Stable for one year after shipment.

Storage Buffer:

PBS with 0.02% sodium azide and 50% glycerol pH 7.3.

Aliquoting is unnecessary for -20°C storage

For technical support and original validation data for this product please contact:

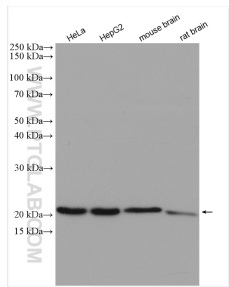
T: 4006900926

E: Proteintech-CN@ptglab.com

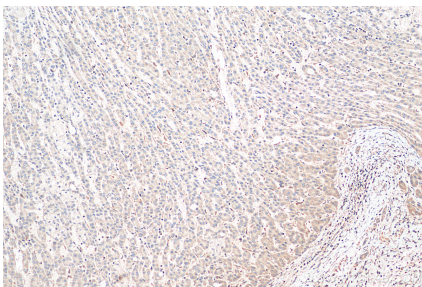
W: ptgcn.com

This product is exclusively available under Proteintech Group brand and is not available to purchase from any other manufacturer.

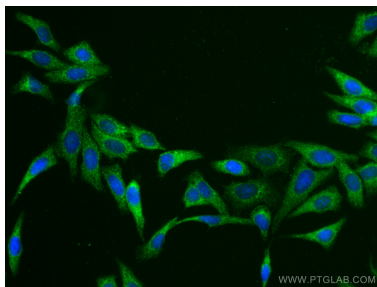
Selected Validation Data



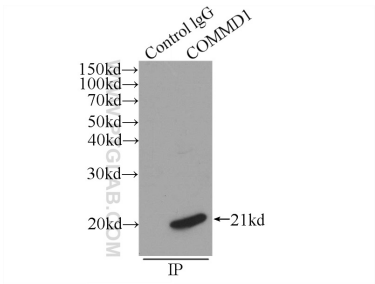
Various lysates were subjected to SDS PAGE followed by western blot with 11938-1-AP (COMMD1 antibody) at dilution of 1:1000 incubated at room temperature for 1.5 hours.



Immunohistochemical analysis of paraffin-embedded human liver cancer tissue slide using 11938-1-AP (COMMD1 antibody) at dilution of 1:200 (under 10x lens). Heat mediated antigen retrieval with Tris-EDTA buffer (pH 9.0).



Immunofluorescent analysis of (-20°C Ethanol) fixed HepG2 cells using COMMD1 antibody (11938-1-AP) at dilution of 1:200 and CoraLite®488-Conjugated Goat Anti-Rabbit IgG(H+L).



IP result of anti-COMMD1 (IP:11938-1-AP, 3ug; Detection:11938-1-AP 1:500) with mouse brain tissue lysate 5200ug.