

For Research Use Only

Beta Sarcoglycan Polyclonal antibody

Catalog Number: 11936-1-AP

5 Publications



Basic Information

Catalog Number:

11936-1-AP

Size:

450 µg/ml

Source:

Rabbit

Isotype:

IgG

Immunogen Catalog Number:

AG2533

GenBank Accession Number:

BC020709

GeneID (NCBI):

6443

UNIPROT ID:

Q16585

Full Name:

sarcoglycan, beta (43kDa dystrophin-associated glycoprotein)

Calculated MW:

318 aa, 35 kDa

Observed MW:

45-48 kDa

Purification Method:

Antigen affinity purification

Recommended Dilutions:

WB 1:1000-1:6000

IHC 1:250-1:1000

Applications

Tested Applications:

WB, IHC, ELISA

Cited Applications:

WB, IHC, IF

Species Specificity:

human, mouse, rat

Cited Species:

human, mouse, rat

Note-IHC: suggested antigen retrieval with TE buffer pH 9.0; (*) Alternatively, antigen retrieval may be performed with citrate buffer pH 6.0

Positive Controls:

WB : mouse skeletal muscle tissue,

IHC : human colon tissue,

Background Information

SGCB is a 43-kD component of the dystrophin-glycoprotein complex.

Notable Publications

Author	Pubmed ID	Journal	Application
Liping Zhang	34411833	Phytomedicine	WB
Lei Yan	39481225	Acta Histochem	WB,IHC
Yanni Xue	39442444	J Pharm Biomed Anal	WB

Storage

Storage:

Store at -20°C. Stable for one year after shipment.

Storage Buffer:

PBS with 0.02% sodium azide and 50% glycerol pH 7.3.

Aliquoting is unnecessary for -20°C storage

For technical support and original validation data for this product please contact:

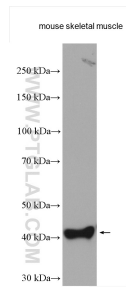
T: 4006900926

E: Proteintech-CN@ptglab.com

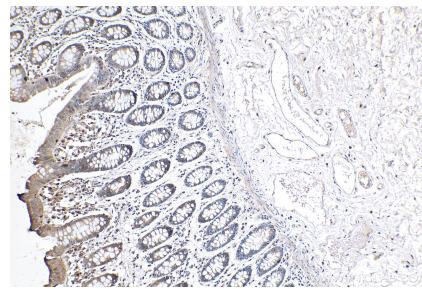
W: ptgcn.com

This product is exclusively available under Proteintech Group brand and is not available to purchase from any other manufacturer.

Selected Validation Data



mouse skeletal muscle tissue were subjected to SDS PAGE followed by western blot with 11936-1-AP (Beta Sarcoglycan antibody) at dilution of 1:3000 incubated at room temperature for 1.5 hours.



Immunohistochemical analysis of paraffin-embedded human colon tissue slide using 11936-1-AP (Beta Sarcoglycan antibody) at dilution of 1:500 (under 10x lens). Heat mediated antigen retrieval with Tris-EDTA buffer (pH 9.0).