

For Research Use Only

CSPP1 Polyclonal antibody

Catalog Number: 11931-1-AP

Featured Product

12 Publications



Basic Information

Catalog Number:

11931-1-AP

Size:

800 µg/ml

Source:

Rabbit

Isotype:

IgG

Immunogen Catalog Number:

AG2521

GenBank Accession Number:

BC029445

GeneID (NCBI):

79848

UNIPROT ID:

Q1MSJ5

Full Name:

centrosome and spindle pole associated protein 1

Calculated MW:

141 kDa

Observed MW:

141 kDa

Purification Method:

Antigen affinity purification

Recommended Dilutions:

WB 1:500-1:1000

IF 1:50-1:500

Applications

Tested Applications:

IF/ICC, WB, ELISA

Cited Applications:

IF, IHC, IP, WB

Species Specificity:

human, mouse, rat

Cited Species:

human, mouse

Positive Controls:

WB: Jurkat cells, HEK-293 cells, HeLa cells, mouse testis tissue, rat testis tissue

IF: HeLa cells,

Background Information

CSPP1 interacts with centrosomes and microtubules and plays a role in cell-cycle progression and spindle organization. CSPP1 is required for their common C-terminal domain to interact with Nephrocystin 8 (NPHP8/RPGRIPL1) and to form a ternary complex with NPHP8 and NPHP4, and for ciliogenesis in hTERT-RPE1 cells in vitro and are expressed in ciliated renal, retinal, and respiratory cells in vivo

Notable Publications

Author	Pubmed ID	Journal	Application
Cecilia Aquino Perez	34080749	EMBO Rep	WB
Robert F Shearer	29742019	Mol Biol Cell	WB,IF
Kiet Hua	28352462	Cilia	IF

Storage

Storage:

Store at -20°C. Stable for one year after shipment.

Storage Buffer:

PBS with 0.02% sodium azide and 50% glycerol pH 7.3.

Aliquoting is unnecessary for -20°C storage

For technical support and original validation data for this product please contact:

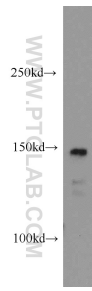
T: 4006900926

E: Proteintech-CN@ptglab.com

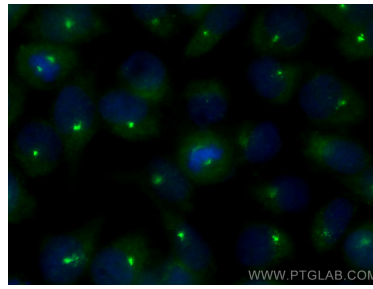
W: ptgcn.com

This product is exclusively available under Proteintech Group brand and is not available to purchase from any other manufacturer.

Selected Validation Data



Jurkat cells were subjected to SDS PAGE followed by western blot with 11931-1-AP (CSPP1 antibody) at dilution of 1:200 incubated at room temperature for 1.5 hours.



Immunofluorescent analysis of (-20°C Methanol) fixed HeLa cells using CSPP1 antibody (11931-1-AP) at dilution of 1:200 and CoraLite® 488-Conjugated AffiniPure Goat Anti-Rabbit IgG(H+L).