

For Research Use Only

# TMEFF2 Polyclonal antibody

Catalog Number: 11928-1-AP **2 Publications**



## Basic Information

<b>Catalog Number:</b> 11928-1-AP	<b>GenBank Accession Number:</b> BC008973	<b>Purification Method:</b> Antigen affinity purification
<b>Size:</b> 350 µg/ml	<b>GeneID (NCBI):</b> 23671	<b>Recommended Dilutions:</b> WB 1:500-1:1000 IHC 1:250-1:1000
<b>Source:</b> Rabbit	<b>UNIPROT ID:</b> Q9UIK5	
<b>Isotype:</b> IgG	<b>Full Name:</b> transmembrane protein with EGF-like and two follistatin-like domains 2	
<b>Immunogen Catalog Number:</b> AG2609	<b>Calculated MW:</b> 374 aa, 41 kDa	
	<b>Observed MW:</b> 41 kDa	

## Applications

<b>Tested Applications:</b> IHC, WB, ELISA	<b>Positive Controls:</b>
<b>Cited Applications:</b> WB, IHC	<b>WB :</b> SH-SY5Y cells, HeLa cells, human brain tissue, PC-3 cells
<b>Species Specificity:</b> human	<b>IHC :</b> human prostate cancer tissue,
<b>Cited Species:</b> human	
<b>Note-IHC: suggested antigen retrieval with TE buffer pH 9.0; (*) Alternatively, antigen retrieval may be performed with citrate buffer pH 6.0</b>	

## Background Information

### Notable Publications

Author	Pubmed ID	Journal	Application
Sidi Xie	33663520	Cancer Cell Int	IHC
Condomines Maud M	19542363	J Immunol	WB

## Storage

**Storage:**  
Store at -20°C. Stable for one year after shipment.  
**Storage Buffer:**  
PBS with 0.02% sodium azide and 50% glycerol pH 7.3.  
Aliquoting is unnecessary for -20°C storage

For technical support and original validation data for this product please contact:

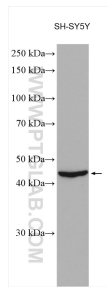
T: 4006900926

E: Proteintech-CN@ptglab.com

W: ptgcn.com

**This product is exclusively available under Proteintech Group brand and is not available to purchase from any other manufacturer.**

## Selected Validation Data



SH-SY5Y cells were subjected to SDS PAGE followed by western blot with 11928-1-AP (TMEFF2 antibody) at dilution of 1:600 incubated at room temperature for 1.5 hours.



Immunohistochemical analysis of paraffin-embedded human prostate cancer tissue slide using 11928-1-AP (TMEFF2 antibody) at dilution of 1:500 (under 10x lens). Heat mediated antigen retrieval with Tris-EDTA buffer (pH 9.0).



Immunohistochemical analysis of paraffin-embedded human prostate cancer tissue slide using 11928-1-AP (TMEFF2 antibody) at dilution of 1:500 (under 40x lens). Heat mediated antigen retrieval with Tris-EDTA buffer (pH 9.0).