

LYZL6 Polyclonal antibody

Catalog Number: 11922-1-AP

Basic Information

Catalog Number:

11922-1-AP

Size:

200 µg/ml

Source:

Rabbit

Isotype:

IgG

Immunogen Catalog Number:

AG2569

GenBank Accession Number:

BC054481

GeneID (NCBI):

57151

UNIPROT ID:

O75951

Full Name:

lysozyme-like 6

Calculated MW:

148 aa, 17 kDa

Observed MW:

17 kDa

Purification Method:

Antigen affinity purification

Recommended Dilutions:

WB 1:500-1:1000

IHC 1:20-1:200

Applications

Tested Applications:

IHC, WB, ELISA

Species Specificity:

human, mouse, rat

Note-IHC: suggested antigen retrieval with **TE buffer pH 9.0; (*)** Alternatively, antigen retrieval may be performed with **citrate buffer pH 6.0**

Positive Controls:

WB : mouse testis tissue, human testis tissue

IHC : rat testis tissue, mouse testis tissue

Background Information

Storage

Storage:

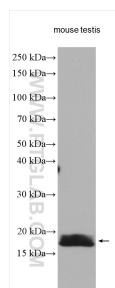
Store at -20°C. Stable for one year after shipment.

Storage Buffer:

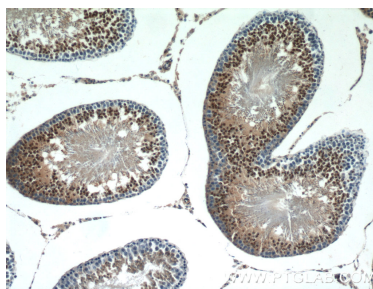
PBS with 0.02% sodium azide and 50% glycerol pH 7.3.

Aliquoting is unnecessary for -20°C storage

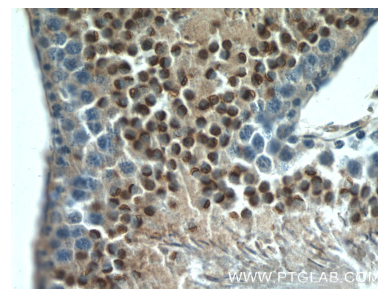
Selected Validation Data



mouse testis lysates were subjected to SDS PAGE followed by western blot with 11922-1-AP (LYZL6 antibody) at dilution of 1:500 incubated at room temperature for 1.5 hours.



Immunohistochemical analysis of paraffin-embedded rat testis tissue slide using 11922-1-AP (LYZL6 Antibody) at dilution of 1:50 (under 10x lens).



Immunohistochemical analysis of paraffin-embedded rat testis tissue slide using 11922-1-AP (LYZL6 Antibody) at dilution of 1:50 (under 40x lens).