

For Research Use Only

# RABL3 Polyclonal antibody

Catalog Number: 11916-1-AP

Featured Product

2 Publications



## Basic Information

### Catalog Number:

11916-1-AP

### Size:

800 µg/ml

### Source:

Rabbit

### Isotype:

IgG

### Immunogen Catalog Number:

AG2531

### GenBank Accession Number:

BC020832

### GeneID (NCBI):

285282

### UNIPROT ID:

Q5HYI8

### Full Name:

RAB, member of RAS oncogene family-like 3

### Calculated MW:

236 aa, 26 kDa

### Observed MW:

26 kDa

### Purification Method:

Antigen affinity purification

### Recommended Dilutions:

WB 1:1000-1:5000

IP 0.5-4.0 µg for 1.0-3.0 mg of total protein lysate

IHC 1:20-1:200

IF/ICC 1:200-1:800

## Applications

### Tested Applications:

WB, IHC, IF/ICC, FC (Intra), IP, ELISA

### Cited Applications:

WB

### Species Specificity:

human, mouse

### Cited Species:

human

**Note-IHC: suggested antigen retrieval with TE buffer pH 9.0; (\*) Alternatively, antigen retrieval may be performed with citrate buffer pH 6.0**

### Positive Controls:

WB: HEK-293 cells, mouse brain tissue, human brain tissue, human lung tissue, HUVEC cells, U-251 cells

IP: mouse lung tissue,

IHC: human breast cancer tissue, human liver cancer tissue, human cervical cancer tissue, human kidney tissue

IF/ICC: A549 cells,

## Background Information

The gene of Rabl3 is located on 3q13.3 and is composed of eight exons and seven introns. It is a member of the Rab subfamily, the largest group in the Ras superfamily of small guanosine triphosphatases (GTPases).

## Notable Publications

Author	Pubmed ID	Journal	Application
Weihua Zhang	27164297	Med Sci Monit	WB
Li Qi Q	20596630	Oncol Rep	WB

## Storage

### Storage:

Store at -20°C. Stable for one year after shipment.

### Storage Buffer:

PBS with 0.02% sodium azide and 50% glycerol pH 7.3.

Aliquoting is unnecessary for -20°C storage

For technical support and original validation data for this product please contact:

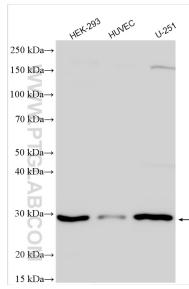
T: 4006900926

E: Proteintech-CN@ptglab.com

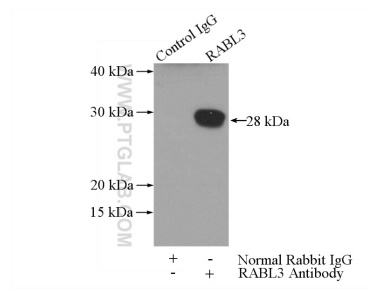
W: ptgcn.com

**This product is exclusively available under Proteintech Group brand and is not available to purchase from any other manufacturer.**

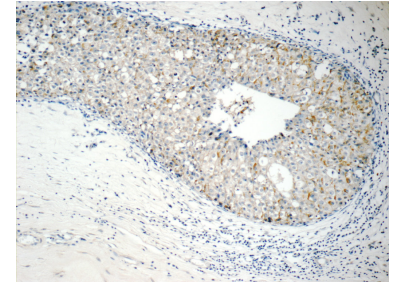
## Selected Validation Data



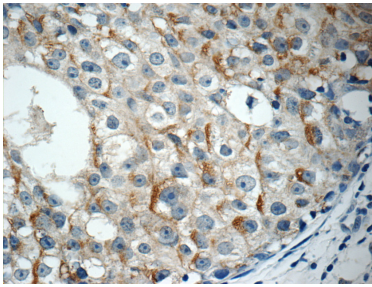
Various lysates were subjected to SDS PAGE followed by western blot with 11916-1-AP (RABL3 antibody) at dilution of 1:2500 incubated at room temperature for 1.5 hours.



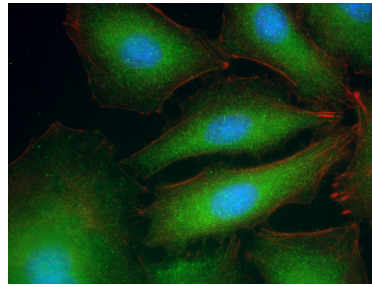
IP result of anti-RABL3 (IP:11916-1-AP, 3ug; Detection:11916-1-AP 1:300) with mouse lung tissue lysate 4000ug.



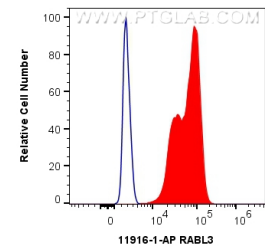
Immunohistochemical analysis of paraffin-embedded human breast cancer tissue slide using 11916-1-AP (RABL3 Antibody) at dilution of 1:50 (under 10x lens).



Immunohistochemical analysis of paraffin-embedded human breast cancer tissue slide using 11916-1-AP (RABL3 Antibody) at dilution of 1:50 (under 40x lens).



Immunofluorescent analysis of (-20°C Ethanol) fixed A549 cells using RABL3 antibody (11916-1-AP) at dilution of 1:400 and CoraLite@488-Conjugated AffiniPure Goat Anti-Rabbit IgG(H+L), CL594-Phalloidin (red).



1x10<sup>6</sup> HEK-293 cells were intracellularly stained with 0.4 ug Anti-Human RABL3 (11916-1-AP) and CoraLite@488-Conjugated AffiniPure Goat Anti-Rabbit IgG(H+L) at dilution 1:1000 (red), or 0.4 ug Isotype Control. Cells were fixed with 4% PFA and permeabilized with Flow Cytometry Perm Buffer (PF00011-C).