

For Research Use Only

# PLRG1 Polyclonal antibody

Catalog Number: 11914-1-AP

Featured Product

2 Publications



## Basic Information

**Catalog Number:**

11914-1-AP

**Size:**

350 µg/ml

**Source:**

Rabbit

**Isotype:**

IgG

**Immunogen Catalog Number:**

AG2527

**GenBank Accession Number:**

BC020786

**GeneID (NCBI):**

5356

**UNIPROT ID:**

O43660

**Full Name:**

pleiotropic regulator 1 (PRL1 homolog, Arabidopsis)

**Calculated MW:**

514 aa, 57 kDa

**Observed MW:**

55-60 kDa

**Purification Method:**

Antigen affinity purification

**Recommended Dilutions:**

WB 1:500-1:2000

IP 0.5-4.0 µg for 1.0-3.0 mg of total protein lysate

IHC 1:50-1:500

## Applications

**Tested Applications:**

IHC, IP, WB, ELISA

**Cited Applications:**

WB

**Species Specificity:**

human

**Cited Species:**

human

**Note-IHC: suggested antigen retrieval with TE buffer pH 9.0; (\*) Alternatively, antigen retrieval may be performed with citrate buffer pH 6.0**

**Positive Controls:**

WB : K-562 cells, HEK-293 cells, BxPC-3 cells

IP : HEK-293 cells,

IHC : human brain tissue,

## Background Information

PLRG1, identified as a component of the CDC5L complex, is one spliceosomal protein highly conserved across species. It has been shown to be essential for pre-mRNA splicing in yeast and humans.

## Notable Publications

Author	Pubmed ID	Journal	Application
Shuyan Liu	33731873	Cell Death Differ	WB
Shuai Hou	31216022	Nucleic Acids Res	WB

## Storage

**Storage:**

Store at -20°C. Stable for one year after shipment.

**Storage Buffer:**

PBS with 0.02% sodium azide and 50% glycerol pH 7.3.

Aliquoting is unnecessary for -20°C storage

For technical support and original validation data for this product please contact:

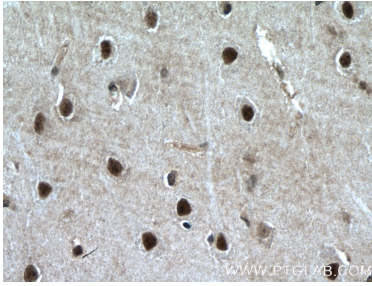
T: 4006900926

E: Proteintech-CN@ptglab.com

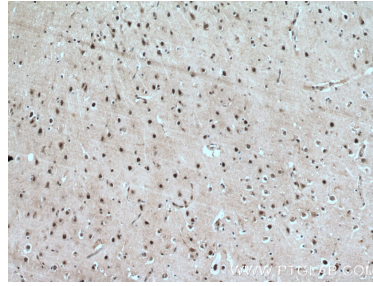
W: ptgcn.com

This product is exclusively available under Proteintech Group brand and is not available to purchase from any other manufacturer.

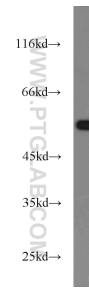
## Selected Validation Data



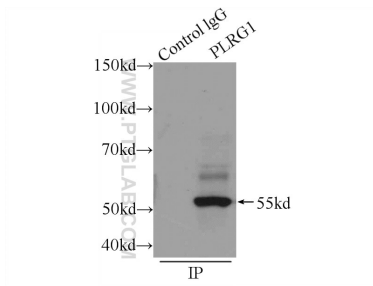
Immunohistochemical analysis of paraffin-embedded human brain tissue slide using 11914-1-AP (PLRG1 antibody) at dilution of 1:200 (under 40x lens). Heat mediated antigen retrieval with Tris-EDTA buffer (pH 9.0).



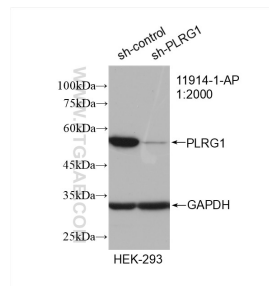
Immunohistochemical analysis of paraffin-embedded human brain tissue slide using 11914-1-AP (PLRG1 antibody) at dilution of 1:200 (under 10x lens). Heat mediated antigen retrieval with Tris-EDTA buffer (pH 9.0).



K-562 cells were subjected to SDS PAGE followed by western blot with 11914-1-AP (PLRG1 antibody) at dilution of 1:1000 incubated at room temperature for 1.5 hours.



IP result of anti-PLRG1 (IP:11914-1-AP, 4ug; Detection:11914-1-AP 1:1000) with HEK-293 cells lysate 1400ug.



WB result of PLRG1 antibody (11914-1-AP; 1:2000; incubated at room temperature for 1.5 hours) with sh-Control and sh-PLRG1 transfected HEK-293 cells.