

For Research Use Only

HuR/ELAVL1 Polyclonal antibody

Catalog Number: 11910-1-AP

Featured Product

95 Publications



Basic Information

Catalog Number:

11910-1-AP

Concentration:

450 µg/ml

Source:

Rabbit

Isotype:

IgG

Immunogen Catalog Number:

AG2249

GenBank Accession Number:

BC003376

GeneID (NCBI):

1994

UNIPROT ID:

Q15717

Full Name:

ELAV (embryonic lethal, abnormal vision, Drosophila)-like 1 (Hu antigen R)

Calculated MW:

326 aa, 36 kDa

Observed MW:

30-37 kDa

Purification Method:

Antigen affinity purification

Recommended Dilutions:

WB 1:2000-1:16000

IP 0.5-4.0 µg for 1.0-3.0 mg of total protein lysate

IHC 1:50-1:500

IF/ICC 1:50-1:500

Applications

Tested Applications:

WB, IHC, IF/ICC, FC (Intra), IP, ELISA

Cited Applications:

WB, IHC, IF, IP, CoIP, ChIP, RIP, CLIP

Species Specificity:

human, mouse, rat

Cited Species:

human, mouse

Note-IHC: suggested antigen retrieval with TE buffer pH 9.0; (*) Alternatively, antigen retrieval may be performed with citrate buffer pH 6.0

Positive Controls:

WB : A431 cells, HEK-293 cells, Jurkat cells

IP : HEK-293 cells,

IHC : human breast cancer tissue, human kidney tissue

IF/ICC : MCF-7 cells,

Background Information

ELAVL1, also named as HUR, belongs to the RRM elav family. It is involved in 3'-UTR ARE-mediated MYC stabilization. ELAVL1 binds avidly to the AU-rich element in FOS and IL3/interleukin-3 mRNAs. In the case of the FOS AU-rich element, ELAVL1 binds to a core element of 27 nucleotides that contain AUUUA, AUUUUA and AUUUUUA motifs.

Notable Publications

Author	Pubmed ID	Journal	Application
Kaili Hao	31695768	Theranostics	IF
Qi Zhu	36386240	Front Pharmacol	WB
Hui Li	26512748	RNA Biol	WB

Storage

Storage:

Store at -20°C. Stable for one year after shipment.

Storage Buffer:

PBS with 0.02% sodium azide and 50% glycerol pH 7.3.

Aliquoting is unnecessary for -20°C storage

For technical support and original validation data for this product please contact:

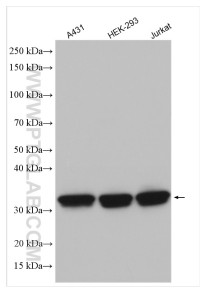
T: 4006900926

E: Proteintech-CN@ptglab.com

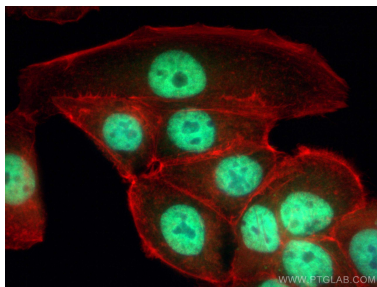
W: ptgcn.com

This product is exclusively available under Proteintech Group brand and is not available to purchase from any other manufacturer.

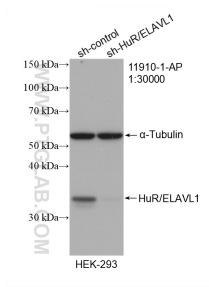
Selected Validation Data



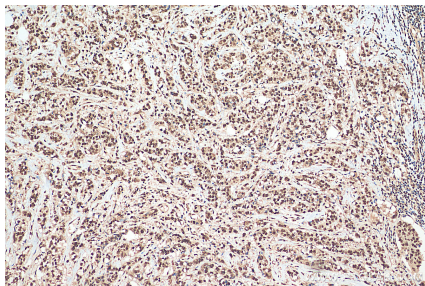
Various lysates were subjected to SDS PAGE followed by western blot with 11910-1-AP (HuR/ELAVL1 antibody) at dilution of 1:8000 incubated at room temperature for 1.5 hours.



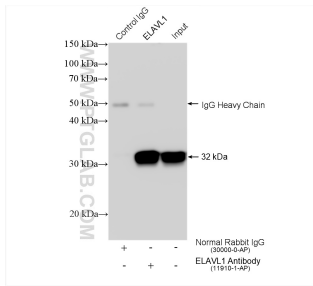
Immunofluorescent analysis of (4% PFA) fixed MCF-7 cells using HuR/ELAVL1 antibody (11910-1-AP) at dilution of 1:200 and CoraLite® 488-Conjugated Goat Anti-Rabbit IgG(H+L), CL594-Phalloidin (red).



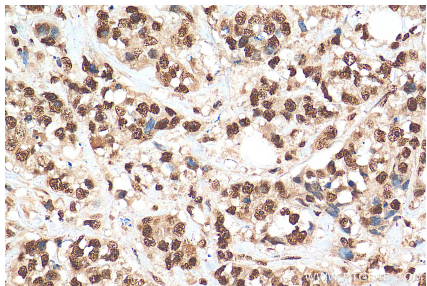
WB result of HuR/ELAVL1 antibody (11910-1-AP; 1:30000; incubated at room temperature for 1.5 hours) with sh-Control and sh-HuR transfected HEK-293 cells.



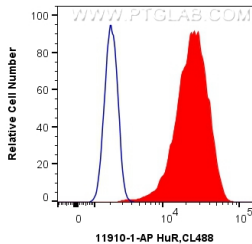
Immunohistochemical analysis of paraffin-embedded human breast cancer tissue slide using 11910-1-AP (HuR/ELAVL1 antibody) at dilution of 1:200 (under 10x lens). Heat mediated antigen retrieval with Tris-EDTA buffer (pH 9.0).



IP result of anti-HuR/ELAVL1 (IP:11910-1-AP, 4ug; Detection:11910-1-AP 1:20000) with HEK-293 cells lysate 1400 ug.



Immunohistochemical analysis of paraffin-embedded human breast cancer tissue slide using 11910-1-AP (HuR antibody) at dilution of 1:200 (under 40x lens). Heat mediated antigen retrieval with Tris-EDTA buffer (pH 9.0).



1X10⁶ MCF-7 cells were intracellularly stained with 0.4 ug Anti-Human HuR/ELAVL1 (11910-1-AP) (red), or 0.4 ug Control Antibody. Cells were fixed and permeabilized with Transcription Factor Staining Buffer Kit (PF00011).