

For Research Use Only

# SCEL Polyclonal antibody

Catalog Number: 11906-1-AP



## Basic Information

**Catalog Number:**

11906-1-AP

**Size:**

800 ug/ml

**Source:**

Rabbit

**Isotype:**

IgG

**Immunogen Catalog Number:**

AG2578

**GenBank Accession Number:**

BC020726

**GeneID (NCBI):**

8796

**UNIPROT ID:**

O95171

**Full Name:**

sciellin

**Calculated MW:**

668 aa, 75 kDa

**Observed MW:**

70-78 kDa

**Purification Method:**

Antigen affinity purification

**Recommended Dilutions:**

WB 1:1000-1:5000

IHC 1:50-1:500

IF/ICC 1:50-1:500

## Applications

**Tested Applications:**

WB, IHC, IF/ICC, FC (Intra), ELISA

**Species Specificity:**

human, mouse

**Note-IHC: suggested antigen retrieval with *TE buffer pH 9.0; (\*) Alternatively, antigen retrieval may be performed with citrate buffer pH 6.0***

**Positive Controls:**

**WB :** human saliva tissue, A431 cells, human skin tissue, mouse skin tissue

**IHC :** human renal cell carcinoma tissue,

**IF/ICC :** HepG2 cells,

## Background Information

### Storage

**Storage:**

Store at -20°C. Stable for one year after shipment.

**Storage Buffer:**

PBS with 0.02% sodium azide and 50% glycerol pH 7.3.

Aliquoting is unnecessary for -20°C storage

For technical support and original validation data for this product please contact:

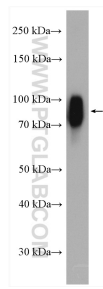
T: 4006900926

E: [Proteintech-CN@ptglab.com](mailto:Proteintech-CN@ptglab.com)

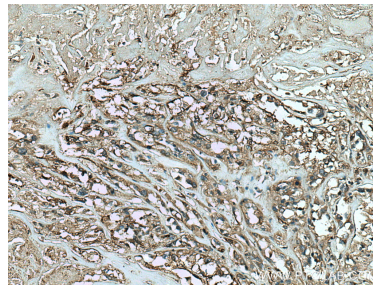
W: [ptgcn.com](http://ptgcn.com)

This product is exclusively available under Proteintech Group brand and is not available to purchase from any other manufacturer.

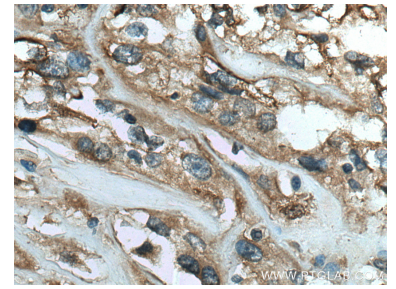
## Selected Validation Data



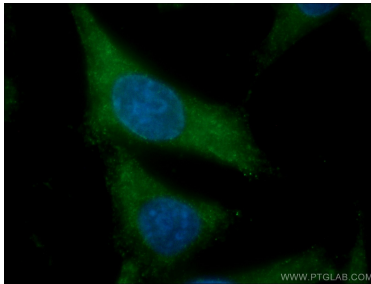
human saliva were subjected to SDS PAGE followed by western blot with 11906-1-AP (SCEL antibody) at dilution of 1:4000 incubated at room temperature for 1.5 hours.



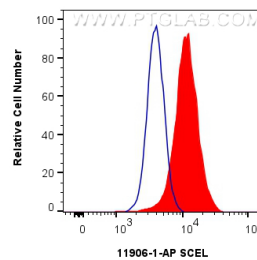
Immunohistochemical analysis of paraffin-embedded human renal cell carcinoma tissue slide using 11906-1-AP (SCEL antibody) at dilution of 1:200 (under 10x lens). Heat mediated antigen retrieval with Tris-EDTA buffer (pH 9.0).



Immunohistochemical analysis of paraffin-embedded human renal cell carcinoma tissue slide using 11906-1-AP (SCEL antibody) at dilution of 1:200 (under 40x lens). Heat mediated antigen retrieval with Tris-EDTA buffer (pH 9.0).



Immunofluorescent analysis of (-20°C Ethanol) fixed HepG2 cells using 11906-1-AP (SCEL antibody) at dilution of 1:50 and Coralite488-Conjugated AffiniPure Goat Anti-Rabbit IgG(H+L).



1x10<sup>6</sup> HeLa cells were intracellularly stained with 0.25 ug SCEL Polyclonal antibody (11906-1-AP) and Coralite®488-Conjugated Goat Anti-Rabbit IgG(H+L) (SA00013-2)(red), or 0.25 ug Rabbit IgG control Rabbit PolyAb (30000-0-AP) (blue). Cells were fixed with 4% PFA and permeabilized with Flow Cytometry Perm Buffer (PF00011-C).