

GRAP2 Polyclonal antibody

Catalog Number: 11894-1-AP

Basic Information

Catalog Number:

11894-1-AP

Size:

400 µg/ml

Source:

Rabbit

Isotype:

IgG

Immunogen Catalog Number:

AG2510

GenBank Accession Number:

BC026002

GeneID (NCBI):

9402

UNIPROT ID:

O75791

Full Name:

GRB2-related adaptor protein 2

Calculated MW:

330 aa, 38 kDa

Observed MW:

38 kDa

Purification Method:

Antigen affinity purification

Recommended Dilutions:

WB 1:500-1:2000

Applications

Tested Applications:

WB, ELISA

Species Specificity:

human, mouse, rat

Positive Controls:

WB : K-562 cells,

Background Information

GRAP2 is a member of the GRB2/Sem5/Drk family. This member is an adaptor-like protein involved in leukocyte-specific protein-tyrosine kinase signaling. Like its related family member, GRB2-related adaptor protein (GRAP), this protein contains an SH2 domain flanked by two SH3 domains. This protein interacts with other proteins, such as GRB2-associated binding protein 1 (GAB1) and the SLP-76 leukocyte protein (LCP2), through its SH3 domains. (refer to Wikipedia)

Storage

Storage:

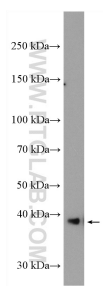
Store at -20°C. Stable for one year after shipment.

Storage Buffer:

PBS with 0.02% sodium azide and 50% glycerol pH 7.3.

Aliquoting is unnecessary for -20°C storage

Selected Validation Data



K-562 cells were subjected to SDS PAGE followed by western blot with 11894-1-AP (GRAP2 antibody) at dilution of 1:1000 incubated at room temperature for 1.5 hours.