

For Research Use Only

APOH Polyclonal antibody

Catalog Number: 11892-1-AP

4 Publications



Basic Information

Catalog Number:

11892-1-AP

Size:

600 ug/ml

Source:

Rabbit

Isotype:

IgG

Immunogen Catalog Number:

AG2500

GenBank Accession Number:

BC026283

GeneID (NCBI):

350

UNIPROT ID:

P02749

Full Name:

apolipoprotein H (beta-2-glycoprotein I)

Calculated MW:

345 aa, 38 kDa

Observed MW:

43-55 kDa

Purification Method:

Antigen affinity purification

Recommended Dilutions:

WB 1:1000-1:4000

IHC 1:200-1:800

IF/ICC 1:200-1:800

Applications

Tested Applications:

WB, IHC, IF/ICC, ELISA

Cited Applications:

WB, IHC, IP

Species Specificity:

human, mouse

Cited Species:

human, mouse

Note-IHC: suggested antigen retrieval with TE buffer pH 9.0; (*) Alternatively, antigen retrieval may be performed with citrate buffer pH 6.0

Positive Controls:

WB : HepG2 cells, mouse testis tissue

IHC : human normal colon,

IF/ICC : HepG2 cells,

Background Information

Apolipoprotein H (ApoH), also known as beta2-glycoprotein I (B2-GPI), is a plasma glycoprotein, primarily synthesized in the liver. It has an important function in blood coagulation and clearance of apoptotic bodies from the circulation. ApoH is also an important actor of host innate immune response through its capacity to bind with high affinity to a large panel of pathogens or their proteins. ApoH is a 54 kDa plasma glycoprotein.

Notable Publications

Author	Pubmed ID	Journal	Application
Chang S Chan	30315258	Nat Commun	IHC
Caijun Zha	29883691	Neuropharmacology	IP
Yutong Wu	39291803	Cancer Med	WB

Storage

Storage:

Store at -20°C. Stable for one year after shipment.

Storage Buffer:

PBS with 0.02% sodium azide and 50% glycerol pH 7.3.

Aliquoting is unnecessary for -20°C storage

For technical support and original validation data for this product please contact:

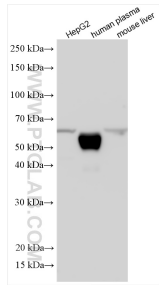
T: 4006900926

E: Proteintech-CN@ptglab.com

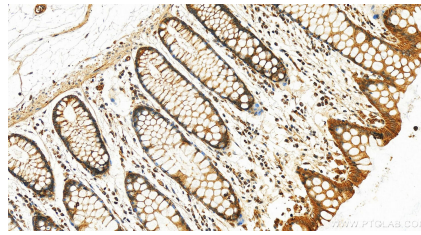
W: ptgcn.com

This product is exclusively available under Proteintech Group brand and is not available to purchase from any other manufacturer.

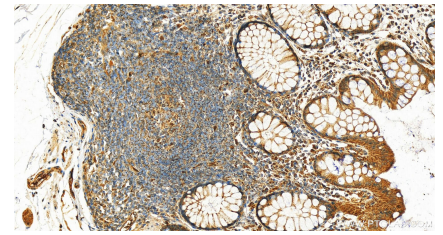
Selected Validation Data



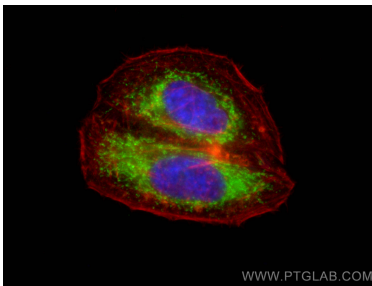
Various lysates were subjected to SDS PAGE followed by western blot with 11892-1-AP (Apolipoprotein H antibody) at dilution of 1:2000 incubated at room temperature for 1.5 hours.



Immunohistochemical analysis of paraffin-embedded human normal colon slide using 11892-1-AP (Apolipoprotein H antibody) at dilution of 1:400 (under 20x lens). Heat mediated antigen retrieval with Tris-EDTA buffer (pH 9.0).



Immunohistochemical analysis of paraffin-embedded human normal colon slide using 11892-1-AP (Apolipoprotein H antibody) at dilution of 1:400 (under 20x lens). Heat mediated antigen retrieval with Tris-EDTA buffer (pH 9.0).



Immunofluorescent analysis of (-20°C Ethanol) fixed HepG2 cells using Apolipoprotein H antibody (11892-1-AP) at dilution of 1:400 and CoraLite®488-Conjugated AffiniPure Goat Anti-Rabbit IgG(H+L), CL594-Phalloidin (red).