

For Research Use Only

# RBBP6 Polyclonal antibody

Catalog Number: 11882-1-AP

Featured Product

1 Publications



## Basic Information

Catalog Number:

11882-1-AP

Size:

500 µg/ml

Source:

Rabbit

Isotype:

IgG

Immunogen Catalog Number:

AG2484

GenBank Accession Number:

BC029352

GeneID (NCBI):

5930

UNIPROT ID:

Q7Z6E9

Full Name:

retinoblastoma binding protein 6

Calculated MW:

1792 aa, 200 kDa

Observed MW:

250 kDa

Purification Method:

Antigen affinity purification

Recommended Dilutions:

WB 1:1000-1:6000

## Applications

Tested Applications:

WB, ELISA

Cited Applications:

WB

Species Specificity:

human, mouse

Cited Species:

human

Positive Controls:

WB : Jurkat cells, HEK-293 cells, MCF-7 cells

## Background Information

RBBP6 (retinoblastoma binding protein 6) is a multifunctional protein that interacts with both p53 and pRb and has been implicated in mRNA processing. It has also been identified as a putative E3 ubiquitin ligase due to the presence of a RING finger domain [PMID:18851979]. RBBP6 contains an N-terminal ubiquitin-like domain and a cysteine-rich RING finger-like domain, through which it promotes the ubiquitination of p53 by Hdm2 in an E4-like manner [PMID:17470788]. It is implicated in a diverse set of cellular functions, including mRNA metabolism, regulation of the cell cycle, tumorigenesis, and development [PMID:12938151,17470788].

## Notable Publications

Author	Pubmed ID	Journal	Application
Christopher Noyes	36653474	Commun Biol	WB

## Storage

Storage:

Store at -20°C. Stable for one year after shipment.

Storage Buffer:

PBS with 0.02% sodium azide and 50% glycerol pH 7.3.

Aliquoting is unnecessary for -20°C storage

For technical support and original validation data for this product please contact:

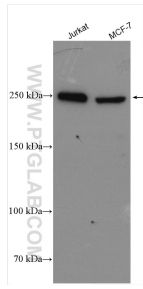
T: 4006900926

E: [Proteintech-CN@ptglab.com](mailto:Proteintech-CN@ptglab.com)

W: [ptgcn.com](http://ptgcn.com)

This product is exclusively available under Proteintech Group brand and is not available to purchase from any other manufacturer.

## Selected Validation Data



Various lysates were subjected to SDS PAGE followed by western blot with 11882-1-AP (RBBP6 antibody) at dilution of 1:3000 incubated at room temperature for 1.5 hours.