

For Research Use Only

KLF10 Polyclonal antibody

Catalog Number: 11881-1-AP

5 Publications



Basic Information

Catalog Number:

11881-1-AP

Size:

200 µg/ml

Source:

Rabbit

Isotype:

IgG

Immunogen Catalog Number:

AG2482

GenBank Accession Number:

BC011538

GeneID (NCBI):

7071

UNIPROT ID:

Q13118

Full Name:

Kruppel-like factor 10

Calculated MW:

469 aa, 51 kDa

Observed MW:

51 kDa

Purification Method:

Antigen affinity purification

Recommended Dilutions:

WB 1:200-1:1000

IP 0.5-4.0 µg for 1.0-3.0 mg of total protein lysate

IF/ICC 1:20-1:200

Applications

Tested Applications:

IF/ICC, IP, WB, ELISA

Cited Applications:

WB, IF, IHC, Chip

Species Specificity:

human

Cited Species:

human, mouse, canine

Positive Controls:

WB : HeLa cells, Jurkat cells

IP : Jurkat cells,

IF/ICC : HeLa cells,

Background Information

KLF10 (Kruppel-like factor 10), also known as TIEG1, is a transcription factor that plays a role in the regulation of cell growth. It binds to the consensus sequence 5'-GGTGTG-3'. KLF10 plays a role in the response to TGFβ (through the TGFβ/Smad signalling pathway) and estrogen. In both cases, KLF10 induces or repressed gene transcription to enhance the TGFβ/Smad signalling pathway, as well as other pathways, to regulate cell proliferation, differentiation and apoptosis. KLF10 has been shown to have a role in skeletal disease (osteopenia/osteoporosis), hypertrophic cardiomyopathy, and breast and prostate cancer. This antibody is a rabbit polyclonal antibody raised against a full-length human KLF10 protein, and specifically recognizes the 52kd KLF10 protein.

Notable Publications

Author	Pubmed ID	Journal	Application
Yongyun Li	34536440	J Mol Cell Cardiol	IF
Xiaoyin Ma	26984531	Sci Rep	Chip
Langlang Zheng	32156482	Acta Histochem	WB, IHC

Storage

Storage:

Store at -20°C. Stable for one year after shipment.

Storage Buffer:

PBS with 0.02% sodium azide and 50% glycerol pH 7.3.

Aliquoting is unnecessary for -20°C storage

For technical support and original validation data for this product please contact:

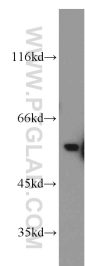
T: 4006900926

E: Proteintech-CN@ptglab.com

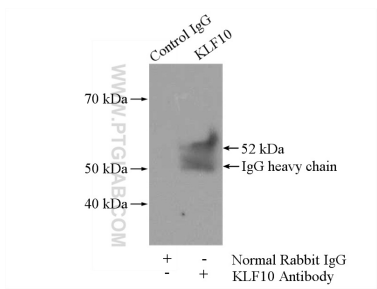
W: ptgcn.com

This product is exclusively available under Proteintech Group brand and is not available to purchase from any other manufacturer.

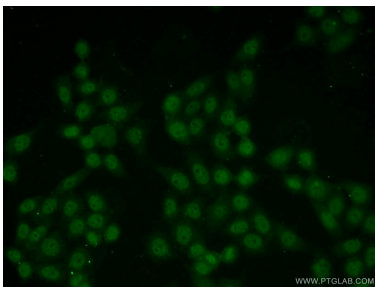
Selected Validation Data



HeLa cells were subjected to SDS PAGE followed by western blot with 11881-1-AP (KLF10 antibody) at dilution of 1:100 incubated at room temperature for 1.5 hours.



IP result of anti-KLF10 (IP:11881-1-AP, 4ug; Detection:11881-1-AP 1:300) with Jurkat cells lysate 2800ug.



Immunofluorescent analysis of HeLa cells using 11881-1-AP (KLF10 antibody) at dilution of 1:50 and Alexa Fluor 488-conjugated AffiniPure Goat Anti-Rabbit IgG(H+L).