

For Research Use Only

# SH2D1B Polyclonal antibody

Catalog Number: 11871-1-AP **7 Publications**



## Basic Information

<b>Catalog Number:</b> 11871-1-AP	<b>GenBank Accession Number:</b> BC022407	<b>Purification Method:</b> Antigen affinity purification
<b>Size:</b> 400 µg/ml	<b>GeneID (NCBI):</b> 117157	<b>Recommended Dilutions:</b> IHC 1:50-1:500 IF 1:50-1:500
<b>Source:</b> Rabbit	<b>UNIPROT ID:</b> O14796	
<b>Isotype:</b> IgG	<b>Full Name:</b> SH2 domain containing 1B	
<b>Immunogen Catalog Number:</b> AG2454	<b>Calculated MW:</b> 132 aa, 15 kDa	
	<b>Observed MW:</b> 15 kDa	

## Applications

<b>Tested Applications:</b> FC, IF, IHC, ELISA	<b>Positive Controls:</b> IHC : human kidney tissue, IF : HepG2 cells,
<b>Cited Applications:</b> FC, CoIP	
<b>Species Specificity:</b> human, mouse, rat	
<b>Cited Species:</b> human	
<b>Note-IHC: suggested antigen retrieval with TE buffer pH 9.0; (*) Alternatively, antigen retrieval may be performed with citrate buffer pH 6.0</b>	

## Background Information

SH2D1B, also named as EAT2, an adaptor expressed in innate immune cells, including natural killer (NK) cells. It plays a role in controlling signal transduction through at least four receptors, CD84, SLAMF1, LY9 and CD244, expressed on the surface of professional antigen-presenting cells. EAT-2 overexpression would enhance the innate immune responses and also result in more potent Carcinoembryonic antigen-specific adaptive immune responses.

## Notable Publications

Author	Pubmed ID	Journal	Application
Lihi Radomir	28904129	J Immunol	FC, CoIP
Ivayla E Gyurova	31824507	Front Immunol	FC
Jaewon Lee	25786175	Immunity	FC

## Storage

**Storage:**  
Store at -20°C. Stable for one year after shipment.  
**Storage Buffer:**  
PBS with 0.02% sodium azide and 50% glycerol pH 7.3.  
Aliquoting is unnecessary for -20°C storage

For technical support and original validation data for this product please contact:

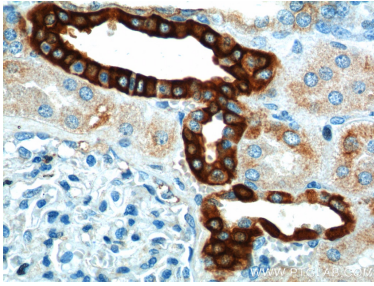
T: 4006900926

E: Proteintech-CN@ptglab.com

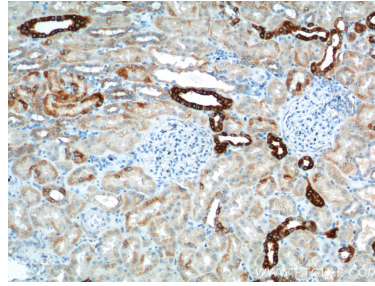
W: ptgcn.com

**This product is exclusively available under Proteintech Group brand and is not available to purchase from any other manufacturer.**

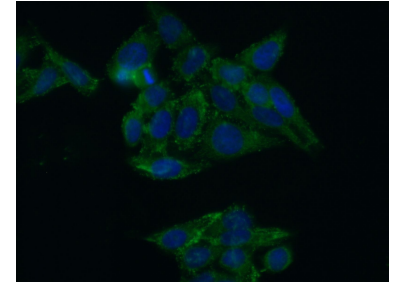
## Selected Validation Data



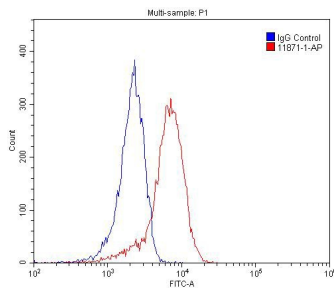
Immunohistochemical analysis of paraffin-embedded human kidney tissue slide using 11871-1-AP (SH2D1B Antibody) at dilution of 1:200 (under 40x lens).



Immunohistochemical analysis of paraffin-embedded human kidney tissue slide using 11871-1-AP (SH2D1B Antibody) at dilution of 1:200 (under 10x lens).



Immunofluorescent analysis of (-20°C Ethanol) fixed HepG2 cells using 11871-1-AP (SH2D1B antibody) at dilution of 1:50 and Alexa Fluor 488-conjugated AffiniPure Goat Anti-Rabbit IgG(H+L).



1X10<sup>6</sup> Jurkat cells were stained with 0.2 $\mu$ g SH2D1B antibody (11871-1-AP, red) and control antibody (blue). Alexa Fluor 488-conjugated AffiniPure Goat Anti-Rabbit IgG(H+L) with dilution 1:1500. Cells were fixed with 4% PFA and permeabilized with 0.1% Triton X-100.