

For Research Use Only

VPS37A Polyclonal antibody

Catalog Number: 11870-1-AP

Featured Product

13 Publications



Basic Information

Catalog Number:

11870-1-AP

Size:

600 µg/ml

Source:

Rabbit

Isotype:

IgG

Immunogen Catalog Number:

AG2453

GenBank Accession Number:

BC022363

GeneID (NCBI):

137492

UNIPROT ID:

Q8NEZ2

Full Name:

vacuolar protein sorting 37 homolog

A (*S. cerevisiae*)

Calculated MW:

44 kDa

Observed MW:

45 kDa

Purification Method:

Antigen affinity purification

Recommended Dilutions:

WB 1:1000-1:8000

IHC 1:50-1:500

IF 1:50-1:500

Applications

Tested Applications:

IF-P, IHC, WB, ELISA

Cited Applications:

WB, IF, IHC

Species Specificity:

human, mouse, rat

Cited Species:

human

Note-IHC: suggested antigen retrieval with TE buffer pH 9.0; (*) Alternatively, antigen retrieval may be performed with citrate buffer pH 6.0

Positive Controls:

WB : HeLa cells, human liver tissue, MCF-7 cells, mouse liver tissue, rat liver tissue

IHC : human kidney tissue,

IF : human liver tissue,

Background Information

VPS37A, also named as HCRP1, belongs to the VPS37 family. It is a regulator of vesicular trafficking process. VPS37A is a member of the endosomal sorting complex required for transport (ESCRT) system, in upper motor neuron disease. ESCRT has been shown to play a central role in intracellular trafficking, in the maturation of multivesicular bodies and the sorting of ubiquitinated membrane proteins into internal luminal vesicles.

Notable Publications

Author	Pubmed ID	Journal	Application
Hao Xu	28963677	Virchows Arch	WB,IHC
Jalal M Kazan	34761192	iScience	WB
Revathi Sekar	36243006	Cell Metab	IF

Storage

Storage:

Store at -20°C. Stable for one year after shipment.

Storage Buffer:

PBS with 0.02% sodium azide and 50% glycerol pH 7.3.

Aliquoting is unnecessary for -20°C storage

For technical support and original validation data for this product please contact:

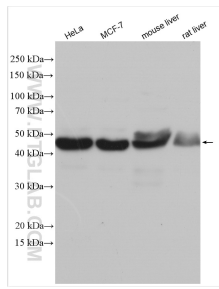
T: 4006900926

E: Proteintech-CN@ptglab.com

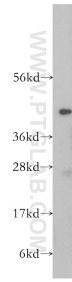
W: ptgcn.com

This product is exclusively available under Proteintech Group brand and is not available to purchase from any other manufacturer.

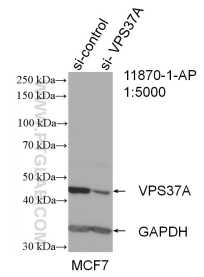
Selected Validation Data



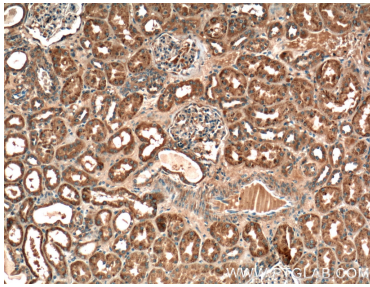
Various lysates were subjected to SDS PAGE followed by western blot with 11870-1-AP (VPS37A antibody) at dilution of 1:4000 incubated at room temperature for 1.5 hours.



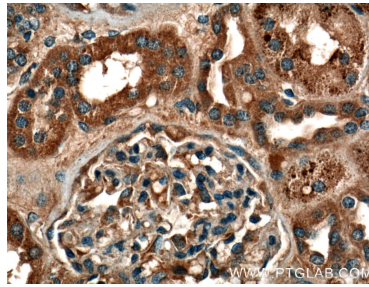
human liver tissue were subjected to SDS PAGE followed by western blot with 11870-1-AP (VPS37A antibody) at dilution of 1:400 incubated at room temperature for 1.5 hours.



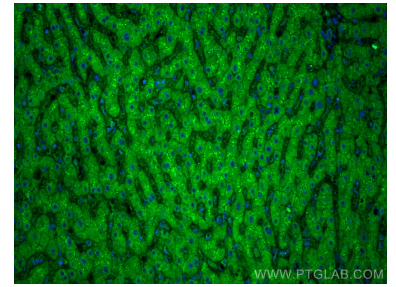
WB result of VPS37A antibody (11870-1-AP; 1:5000; incubated at room temperature for 1.5 hours) with sh-Control and sh-VPS37A transfected MCF-7 cells.



Immunohistochemical analysis of paraffin-embedded human kidney tissue slide using 11870-1-AP (VPS37A antibody) at dilution of 1:200 (under 10x lens).



Immunohistochemical analysis of paraffin-embedded human kidney tissue slide using 11870-1-AP (VPS37A antibody) at dilution of 1:200 (under 40x lens).



Immunofluorescent analysis of (4% PFA) fixed human liver tissue using VPS37A antibody (11870-1-AP) at dilution of 1:200 and CoraLite®488-Conjugated AffiniPure Goat Anti-Rabbit IgG(H+L).