

For Research Use Only

PHOSPHO2 Polyclonal antibody

Catalog Number: 11869-1-AP



Basic Information

Catalog Number: 11869-1-AP	GenBank Accession Number: BC022324	Purification Method: Antigen affinity purification
Size: 300 µg/ml	GeneID (NCBI): 493911	Recommended Dilutions: WB 1:200-1:1000
Source: Rabbit	UNIPROT ID: Q8TCD6	
Isotype: IgG	Full Name: phosphatase, orphan 2	
Immunogen Catalog Number: AG2451	Calculated MW: 241 aa, 28 kDa	
	Observed MW: 28 kDa	

Applications

Tested Applications: WB, ELISA	Positive Controls: WB : mouse testis tissue,
Species Specificity: mouse	

Background Information

PHOSPHO2 belongs to the HAD-like hydrolase superfamily and PHOSPHO family. PHOSPHO2 is a phosphatase that has high activity toward pyridoxal 5'-phosphate (PLP). PHOSPHO2 is also active at much lower level toward pyrophosphate, phosphoethanolamine (PEA), phosphocholine (PCho), phospho-L-tyrosine, fructose-6-phosphate, p-nitrophenyl phosphate, and h-glycerophosphate. The molecular weight of PHOSPHO2 is 28 kDa.

Storage

Storage:
Store at -20°C. Stable for one year after shipment.
Storage Buffer:
PBS with 0.02% sodium azide and 50% glycerol pH 7.3.
Aliquoting is unnecessary for -20°C storage

For technical support and original validation data for this product please contact:

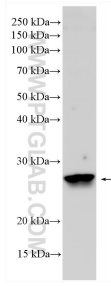
T: 4006900926

E: Proteintech-CN@ptglab.com

W: ptgcn.com

This product is exclusively available under Proteintech Group brand and is not available to purchase from any other manufacturer.

Selected Validation Data



mouse testis tissue were subjected to SDS PAGE followed by western blot with 11869-1-AP (PHOSPHO2 antibody) at dilution of 1:300 incubated at room temperature for 1.5 hours.