

For Research Use Only

# UBE2E2 Polyclonal antibody

Catalog Number: 11844-1-AP

Featured Product

4 Publications



## Basic Information

**Catalog Number:**

11844-1-AP

**Size:**

800 µg/ml

**Source:**

Rabbit

**Isotype:**

IgG

**Immunogen Catalog Number:**

AG2509

**GenBank Accession Number:**

BC022332

**GeneID (NCBI):**

7325

**UNIPROT ID:**

Q96LR5

**Full Name:**

ubiquitin-conjugating enzyme E2E 2  
(UBC4/5 homolog, yeast)

**Calculated MW:**

201 aa, 22 kDa

**Observed MW:**

22 kDa

**Purification Method:**

Antigen affinity purification

**Recommended Dilutions:**

WB 1:500-1:1000

IHC 1:20-1:200

IF 1:10-1:100

## Applications

**Tested Applications:**

IF/ICC, IHC, WB, ELISA

**Cited Applications:**

WB, IHC

**Species Specificity:**

human, mouse, rat

**Cited Species:**

human

**Note-IHC: suggested antigen retrieval with TE buffer pH 9.0; (\*) Alternatively, antigen retrieval may be performed with citrate buffer pH 6.0**

**Positive Controls:**

WB: human thyroid gland tissue, human brain tissue, mouse embryo tissue

IHC: human gliomas tissue,

IF: HepG2 cells,

## Background Information

UBE2E2(ubiquitin-conjugating enzyme E2 E2) is also named as UBCH8 and belongs to the ubiquitin-conjugating enzyme family. This gene encodes a 22 kDa protein that functions as a major ISG15 E2 enzyme raises the possibility that ISG15 conjugation might use UbcH8-competent Ub E3 enzymes and also function as an E2 for several Ub E3 enzymes, including both HECT E3s and RING E3s(PMID: 15131269).

## Notable Publications

Author	Pubmed ID	Journal	Application
Mei-Juan Zhou	28035359	Int J Mol Med	WB
Kate E Coleman	26272819	Genes Dev	WB
Xiaoling Hong	36765041	Cell Death Dis	WB, IHC

## Storage

**Storage:**

Store at -20°C. Stable for one year after shipment.

**Storage Buffer:**

PBS with 0.02% sodium azide and 50% glycerol pH 7.3.

Aliquoting is unnecessary for -20°C storage

For technical support and original validation data for this product please contact:

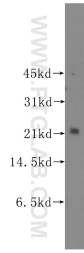
T: 4006900926

E: Proteintech-CN@ptglab.com

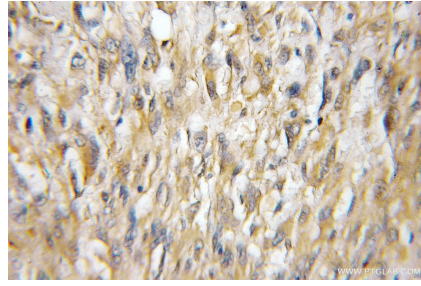
W: ptgcn.com

**This product is exclusively available under Proteintech Group brand and is not available to purchase from any other manufacturer.**

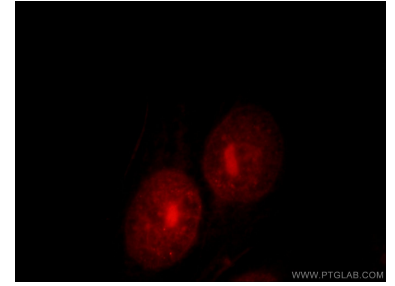
## Selected Validation Data



human thyroid gland tissue were subjected to SDS PAGE followed by western blot with 11844-1-AP (UBE2E2 antibody) at dilution of 1:300 incubated at room temperature for 1.5 hours.



Immunohistochemical analysis of paraffin-embedded human gliomas using 11844-1-AP (UBE2E2 antibody) at dilution of 1:50 (under 10x lens).



Immunofluorescent analysis of HepG2 cells, using UBE2E2 antibody 11844-1-AP at 1:25 dilution and Rhodamine-labeled goat anti-rabbit IgG (red).