

For Research Use Only

LBP Polyclonal antibody

Catalog Number: 11836-1-AP **3 Publications**



Basic Information

Catalog Number: 11836-1-AP	GenBank Accession Number: BC022256	Purification Method: Antigen affinity purification
Size: 150 µg/ml	GeneID (NCBI): 3929	Recommended Dilutions: WB 1:500-1:2000
Source: Rabbit	UNIPROT ID: P18428	IP 0.5-4.0 ug for 1.0-3.0 mg of total protein lysate
Isotype: IgG	Full Name: lipopolysaccharide binding protein	IHC 1:50-1:500
Immunogen Catalog Number: AG2431	Calculated MW: 481 aa, 53 kDa	IF 1:20-1:200
	Observed MW: 63-67 kDa	

Applications

Tested Applications:
FC, IF/ICC, IHC, IP, WB, ELISA

Cited Applications:
WB, IHC

Species Specificity:
human, mouse, rat

Cited Species:
human, rat

Note-IHC: suggested antigen retrieval with TE buffer pH 9.0; (*) Alternatively, antigen retrieval may be performed with citrate buffer pH 6.0

Positive Controls:

WB : mouse liver tissue, A431 cells, A549 cells, HeLa cells, Jurkat cells, L02 cells, rat liver tissue

IP : mouse liver tissue,

IHC : human liver tissue,

IF : L02 cells, HepG2 cells

Background Information

LBP belongs to the BPI/LBP/Plunc superfamily and BPI/LBP family. It binds to the lipid A moiety of bacterial lipopolysaccharides (LPS) which is a glycolipid present in the outer membrane of all Gram-negative bacteria. The LBP/LPS complex seems to interact with the CD14 receptor. LBP is involved in the acute-phase immunologic response to gram-negative bacterial infections. In many tissue/cells, we get 53-60kd and 63-67kd (Glycosylation form).

Notable Publications

Author	Pubmed ID	Journal	Application
Nataliya Smith	31628293	J Neurosurg	
Takafumi Kobayashi	31714656	J Biomed Mater Res A	IHC
Ning Wang	29573061	Cancer Sci	WB

Storage

Storage:
Store at -20°C. Stable for one year after shipment.
Storage Buffer:
PBS with 0.02% sodium azide and 50% glycerol pH 7.3.
Aliquoting is unnecessary for -20°C storage

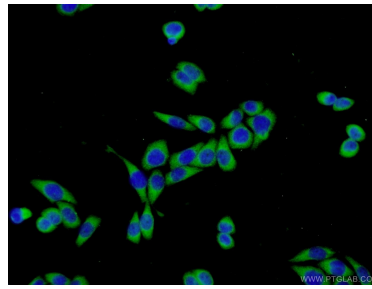
For technical support and original validation data for this product please contact:
T: 4006900926 E: Proteintech-CN@ptglab.com W: ptgcn.com

This product is exclusively available under Proteintech Group brand and is not available to purchase from any other manufacturer.

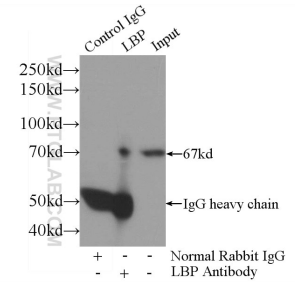
Selected Validation Data



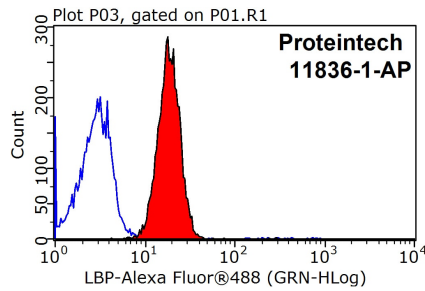
mouse liver tissue were subjected to SDS PAGE followed by western blot with 11836-1-AP (LBP antibody) at dilution of 1:1000 incubated at room temperature for 1.5 hours.



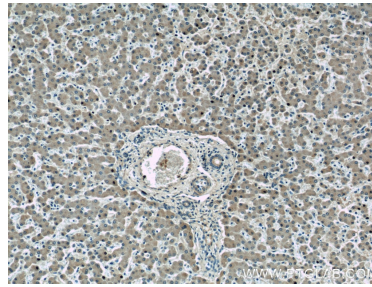
Immunofluorescent analysis of L02 cells using 11836-1-AP (LBP antibody) at dilution of 1:50 and Alexa Fluor 488-conjugated AffiniPure Goat Anti-Rabbit IgG(H+L).



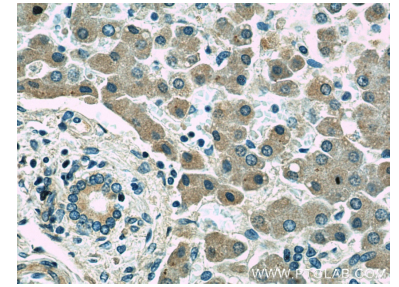
IP result of anti-LBP (IP:11836-1-AP, 4ug; Detection:11836-1-AP 1:1000) with mouse liver tissue lysate 4000ug.



1X10⁶ HeLa cells were stained with 0.2ug LBP antibody (11836-1-AP, red) and control antibody (blue). Fixed with 90% MeOH blocked with 3% BSA (30 min). Alexa Fluor 488-conjugated AffiniPure Goat Anti-Rabbit IgG(H+L) with dilution 1:1500.



Immunohistochemical analysis of paraffin-embedded human liver slide using 11836-1-AP (LBP Antibody) at dilution of 1:50.



Immunohistochemical analysis of paraffin-embedded human liver slide using 11836-1-AP (LBP Antibody) at dilution of 1:50.