

## CIB1 Polyclonal antibody

Catalog Number: 11823-1-AP

Featured Product

10 Publications

## Basic Information

## Catalog Number:

11823-1-AP

## Size:

700 µg/ml

## Source:

Rabbit

## Isotype:

IgG

## Immunogen Catalog Number:

AG2391

## GenBank Accession Number:

BC000846

## GeneID (NCBI):

10519

## UNIPROT ID:

Q99828

## Full Name:

calcium and integrin binding 1 (calmyrin)

## Calculated MW:

22 kDa

## Observed MW:

22 kDa

## Purification Method:

Antigen affinity purification

## Recommended Dilutions:

WB 1:500-1:2400

IP 0.5-4.0 µg for 1.0-3.0 mg of total protein lysate

IHC 1:20-1:200

IF 1:50-1:500

## Applications

## Tested Applications:

IF/ICC, IHC, IP, WB, ELISA

## Cited Applications:

WB, IP, IF, IHC

## Species Specificity:

human, mouse, rat

## Cited Species:

human, rat, mouse

**Note-IHC: suggested antigen retrieval with TE buffer pH 9.0; (\*) Alternatively, antigen retrieval may be performed with citrate buffer pH 6.0**

## Positive Controls:

WB : human liver tissue, HepG2 cells, rat testis tissue

IP : mouse testis tissue,

IHC : human breast cancer tissue, human testis tissue, rat testis tissue

IF : A549 cells,

## Background Information

CIB1(Calcium and integrin-binding protein 1) is also named as CIB, KIP, PRKDCIP. It is an EF-hand-containing protein that binds multiple effector proteins, including the platelet  $\alpha$  IIb  $\beta$  3 integrin and several serine/threonine kinases and potentially modulates their function. It regulates platelet aggregation in hemostasis through a specific interaction with the  $\alpha$ IIb cytoplasmic domain of platelet integrin  $\alpha$ IIb $\beta$ 3.

## Notable Publications

Author	Pubmed ID	Journal	Application
Chirosree Bandyopadhyay	25253349	J Virol	WB, IF
Yuanqi Liu	33082516	Cell Death Differ	IP
Magdalena Czeredys	24324398	Front Mol Neurosci	WB

## Storage

## Storage:

Store at -20°C. Stable for one year after shipment.

## Storage Buffer:

PBS with 0.02% sodium azide and 50% glycerol pH 7.3.

Aliquoting is unnecessary for -20°C storage

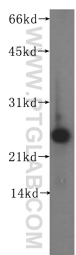
For technical support and original validation data for this product please contact:

T: 4006900926

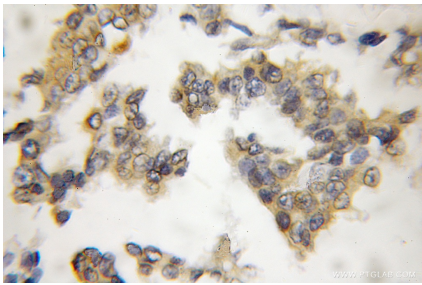
E: [Proteintech-CN@ptglab.com](mailto:Proteintech-CN@ptglab.com)W: [ptgcn.com](http://ptgcn.com)

This product is exclusively available under Proteintech Group brand and is not available to purchase from any other manufacturer.

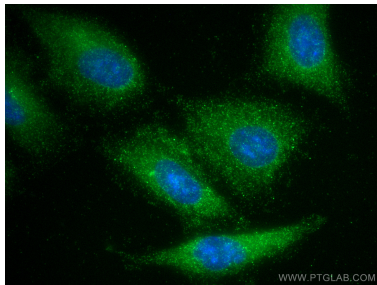
Selected Validation Data



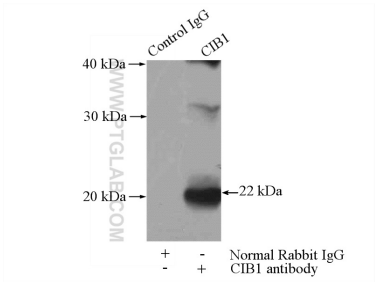
human liver tissue were subjected to SDS PAGE followed by western blot with 11823-1-AP (CIB1 antibody) at dilution of 1:400 incubated at room temperature for 1.5 hours.



Immunohistochemical analysis of paraffin-embedded human breast cancer using 11823-1-AP (CIB1 antibody) at dilution of 1:50 (under 10x lens).



Immunofluorescent analysis of (-20°C Methanol) fixed A549 cells using CIB1 antibody (11823-1-AP) at dilution of 1:200 and CoraLite®488-Conjugated AffiniPure Goat Anti-Rabbit IgG(H+L).



IP result of anti-CIB1 (IP:11823-1-AP, 4ug; Detection:11823-1-AP 1:300) with mouse testis tissue lysate 4000ug.