

C4BPA Polyclonal antibody

Catalog Number: 11819-1-AP

4 Publications

Basic Information

Catalog Number:

11819-1-AP

Size:

500 µg/ml

Source:

Rabbit

Isotype:

IgG

Immunogen Catalog Number:

AG2387

GenBank Accession Number:

BC022312

GeneID (NCBI):

722

UNIPROT ID:

P04003

Full Name:

complement component 4 binding protein, alpha

Calculated MW:

597 aa, 67 kDa

Observed MW:

70 kDa

Purification Method:

Antigen affinity purification

Recommended Dilutions:

WB 1:500-1:1000

IHC 1:20-1:200

Applications

Tested Applications:

IHC, WB, ELISA

Cited Applications:

WB, IHC

Species Specificity:

human

Cited Species:

human

Note-IHC: suggested antigen retrieval with TE buffer pH 9.0; (*) Alternatively, antigen retrieval may be performed with citrate buffer pH 6.0

Positive Controls:

WB : human blood tissue, human plasma tissue

IHC : human liver cancer tissue,

Background Information

C4b-binding protein (C4BP) is a large oligomeric glycoprotein, present in plasma at a concentration of approximately 200 mg/L (PMID: 24218259). It is the main inhibitor of the classical complement and lectin pathway. C4BP is composed of two polypeptides (alpha and beta chains), which have molecular weights of 70 and 45 kDa, respectively (PMID: 7561113). This polyclonal antibody is raised against the C4BP alpha chain (C4BPA).

Notable Publications

Author	Pubmed ID	Journal	Application
Guoxing Feng	27050367	Oncotarget	IHC
Ping Zhao	30841875	BMC Cancer	WB
Wei Dong	36471393	World J Surg Oncol	WB

Storage

Storage:

Store at -20°C. Stable for one year after shipment.

Storage Buffer:

PBS with 0.02% sodium azide and 50% glycerol pH 7.3.

Aliquoting is unnecessary for -20°C storage

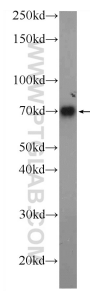
For technical support and original validation data for this product please contact:

T: 4006900926

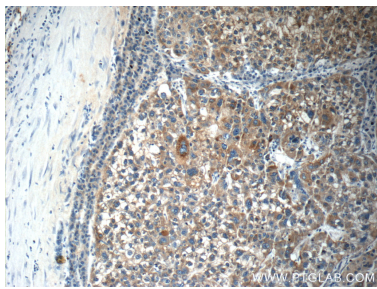
E: Proteintech-CN@ptglab.comW: ptgcn.com

This product is exclusively available under Proteintech Group brand and is not available to purchase from any other manufacturer.

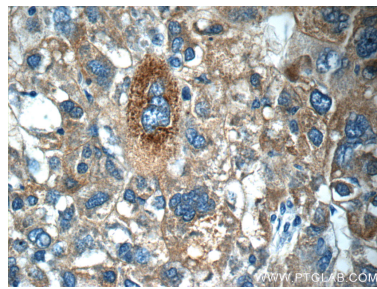
Selected Validation Data



human blood were subjected to SDS PAGE followed by western blot with 11819-1-AP (C4BPA Antibody) at dilution of 1:600 incubated at room temperature for 1.5 hours.



Immunohistochemical analysis of paraffin-embedded human liver cancer tissue slide using 11819-1-AP (C4BPA Antibody) at dilution of 1:50 (under 10x lens).



Immunohistochemical analysis of paraffin-embedded human liver cancer tissue slide using 11819-1-AP (C4BPA Antibody) at dilution of 1:50 (under 40x lens).