

For Research Use Only

RFC3 Polyclonal antibody

Catalog Number: 11814-1-AP

Featured Product

3 Publications



Basic Information

Catalog Number:

11814-1-AP

Size:

260 µg/ml

Source:

Rabbit

Isotype:

IgG

Immunogen Catalog Number:

AG2269

GenBank Accession Number:

BC000149

GeneID (NCBI):

5983

UNIPROT ID:

P40938

Full Name:

replication factor C (activator 1) 3,
38kDa

Calculated MW:

40 aa, 6 kDa

Observed MW:

38 kDa

Purification Method:

Antigen affinity purification

Recommended Dilutions:

WB 1:500-1:3000

IP 0.5-4.0 µg for 1.0-3.0 mg of total
protein lysate

IF 1:50-1:500

Applications

Tested Applications:

IF/ICC, IP, WB, ELISA

Cited Applications:

WB

Species Specificity:

human, mouse, rat

Cited Species:

human, mouse

Positive Controls:

WB : human liver tissue, HeLa cells, human heart tissue

IP : HeLa cells,

IF : HepG2 cells,

Background Information

RFC3, also known as RFC38, is a 356 amino acid protein, which localizes in nucleus. Replication factor C (RFC) is a component of the eukaryotic DNA polymerase. In all eukaryotic cell cycles, it is essential for DNA duplication, DNA injury repair and checkpoint control. RFC consists of five subunits (RFC1-5). The interrelationships between RFC2, RFC3 and the c-MYC oncogene (transcription factor) can induce cell division and proliferation. RFC3 is associated with liver, breast, esophageal and ovarian cancer, and serves a critical role in cellular proliferation, invasion and metastasis. RFC3 exists two isoforms with molecular weight of 34 kDa and 38-40 kDa.

Notable Publications

Author	Pubmed ID	Journal	Application
Jianguo Yang	33691114	Cell Rep	WB
Kai Ren	34930359	Viol J	WB
Stephen Gray	32640224	Cell Rep	WB

Storage

Storage:

Store at -20°C. Stable for one year after shipment.

Storage Buffer:

PBS with 0.02% sodium azide and 50% glycerol pH 7.3.

Aliquoting is unnecessary for -20°C storage

For technical support and original validation data for this product please contact:

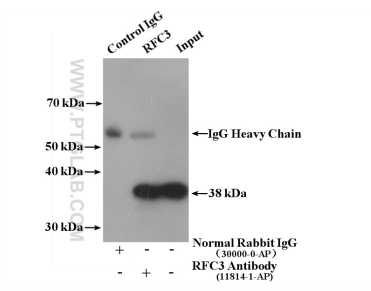
T: 4006900926

E: Proteintech-CN@ptglab.com

W: ptgcn.com

This product is exclusively available under Proteintech Group brand and is not available to purchase from any other manufacturer.

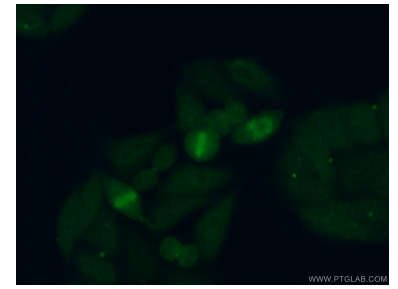
Selected Validation Data



HeLa cells were subjected to SDS PAGE followed by western blot with 11814-1-AP (RFC3 antibody) at dilution of 1:300.



human liver tissue were subjected to SDS PAGE followed by western blot with 11814-1-AP (RFC3 antibody) at dilution of 1:500 incubated at room temperature for 1.5 hours.



Immunofluorescent analysis of (10% Formaldehyde) fixed HepG2 cells using 11814-1-AP (RFC3 antibody) at dilution of 1:50 and Alexa Fluor 488-conjugated AffiniPure Goat Anti-Rabbit IgG(H+L).