

For Research Use Only

RAB10 Polyclonal antibody

Catalog Number: 11808-1-AP

Featured Product

28 Publications



Basic Information

Catalog Number:

11808-1-AP

Source:

Rabbit

Isotype:

IgG

Immunogen Catalog Number:

AG2473

GenBank Accession Number:

BC000896

GeneID (NCBI):

10890

UNIPROT ID:

P61026

Full Name:

RAB10, member RAS oncogene family

Calculated MW:

200 aa, 23 kDa

Observed MW:

23 kDa

Purification Method:

Antigen affinity purification

Recommended Dilutions:

WB: 1:500-1:3000

IHC: 1:50-1:500

IF/ICC: 1:200-1:800

Applications

Tested Applications:

WB, IHC, IF/ICC, ELISA

Cited Applications:

WB, IHC, IF, IP

Species Specificity:

human, mouse, rat, canine

Cited Species:

human, mouse, rat, zebrafish

Note-IHC: suggested antigen retrieval with TE buffer pH 9.0; (*) Alternatively, antigen retrieval may be performed with citrate buffer pH 6.0

Positive Controls:

WB : mouse brain tissue, NIH/3T3 cells, rat brain tissue, C6 cells, HeLa cells, MCF-7 cells, MDCK cells

IHC : human liver cancer tissue,

IF/ICC : NIH/3T3 cells,

Background Information

RAB10 belongs to the RAS superfamily of small GTPases. RAB10 localizes to a system of tubules and vesicles, and it may be involved in vesicular trafficking and neurotransmitter release. It is also associated with Glut4 translocation in adipocytes.

Notable Publications

Author	Pubmed ID	Journal	Application
Yanbin Zhang	27659785	J Cancer Res Clin Oncol	WB
Yu Lian	30326930	J Exp Clin Cancer Res	WB
Tao Tao	31152060	J Biol Chem	WB

Storage

Storage:

Store at -20°C. Stable for one year after shipment.

Storage Buffer:

PBS with 0.02% sodium azide and 50% glycerol, pH7.3

Aliquoting is unnecessary for -20°C storage

For technical support and original validation data for this product please contact:

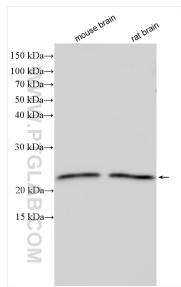
T: 4006900926

E: Proteintech-CN@ptglab.com

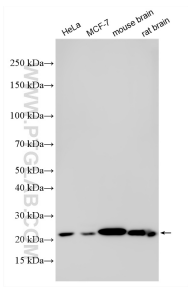
W: ptgcn.com

This product is exclusively available under Proteintech Group brand and is not available to purchase from any other manufacturer.

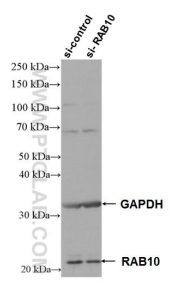
Selected Validation Data



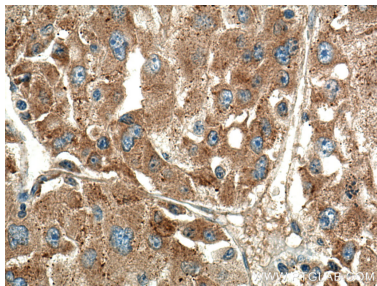
Various lysates were subjected to SDS PAGE followed by western blot with 11808-1-AP (RAB10 antibody) at dilution of 1:1500 incubated at room temperature for 1.5 hours.



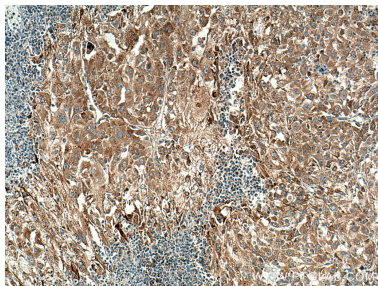
Various lysates were subjected to SDS PAGE followed by western blot with 11808-1-AP (RAB10 antibody) at dilution of 1:3000 incubated at room temperature for 1.5 hours.



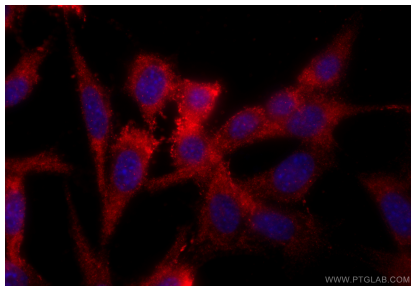
WB result of RAB10 antibody (11808-1-AP; 1:300; incubated at room temperature for 1.5 hours) with sh-Control and sh-RAB10 transfected HeLa cells.



Immunohistochemical analysis of paraffin-embedded human liver cancer tissue slide using 11808-1-AP (RAB10 antibody) at dilution of 1:200 (under 40x lens). Heat mediated antigen retrieval with Tris-EDTA buffer (pH 9.0).



Immunohistochemical analysis of paraffin-embedded human liver cancer tissue slide using 11808-1-AP (RAB10 antibody) at dilution of 1:200 (under 10x lens). Heat mediated antigen retrieval with Tris-EDTA buffer (pH 9.0).



Immunofluorescent analysis of (-20°C Ethanol) fixed NIH/3T3 cells using RAB10 antibody (11808-1-AP) at dilution of 1:400 and CoraLite®594-Conjugated Goat Anti-Rabbit IgG(H+L) (SA00013-4).