

For Research Use Only

S100P Polyclonal antibody

Catalog Number: 11803-1-AP **8 Publications**



Basic Information

Catalog Number: 11803-1-AP	GenBank Accession Number: BC006819	Purification Method: Antigen affinity purification
Size: 1500 µg/ml	GeneID (NCBI): 6286	Recommended Dilutions: WB 1:500-1:2000 IHC 1:4000-1:16000 IF 1:200-1:800
Source: Rabbit	UNIPROT ID: P25815	
Isotype: IgG	Full Name: S100 calcium binding protein P	
Immunogen Catalog Number: AG2379	Calculated MW: 95 aa, 11 kDa	
	Observed MW: 10 kDa	

Applications

Tested Applications: FC, IF/ICC, IHC, WB, ELISA	Positive Controls: WB : HeLa cells, HuH-7 cells
Cited Applications: WB, IHC	IHC : human pancreas cancer tissue, human colon cancer tissue, human lung cancer tissue, human urothelial carcinoma tissue
Species Specificity: human	IF : HeLa cells, HepG2 cells
Cited Species: human, mouse	
Note-IHC: suggested antigen retrieval with TE buffer pH 9.0; (*) Alternatively, antigen retrieval may be performed with citrate buffer pH 6.0	

Background Information

S100P protein is a relatively small (95 amino acid) isoform of the S100 protein family that was first isolated from human placenta. Overexpression of S100P has been detected in several cancers such as breast, colon, prostate, pancreatic and lung carcinomas, and the protein has been functionally implicated in carcinogenic processes. S100P protein is widely expressed in both normal and neoplastic tissues. It clearly shows ectopic expression in some cancers. Based on the high expression in certain tumors, S100P could represent a potential target for novel diagnostic and therapeutic applications.

Notable Publications

Author	Pubmed ID	Journal	Application
Chengyu Wang	33767765	Exp Ther Med	WB
F Lam Francis F	21137016	Proteomics Clin Appl	IHC
Xiangyu Wang	26396916	Am J Cancer Res	WB, IHC

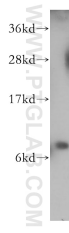
Storage

Storage:
Store at -20°C. Stable for one year after shipment.
Storage Buffer:
PBS with 0.02% sodium azide and 50% glycerol pH 7.3.
Aliquoting is unnecessary for -20°C storage

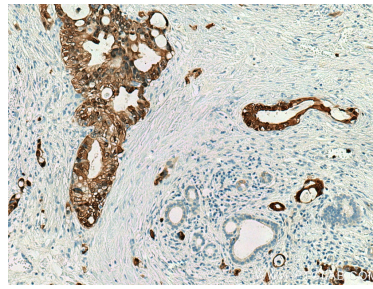
For technical support and original validation data for this product please contact:
T: 4006900926 E: Proteintech-CN@ptglab.com W: ptgcn.com

This product is exclusively available under Proteintech Group brand and is not available to purchase from any other manufacturer.

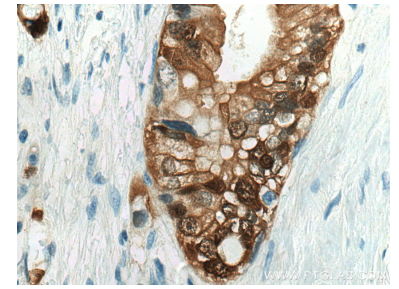
Selected Validation Data



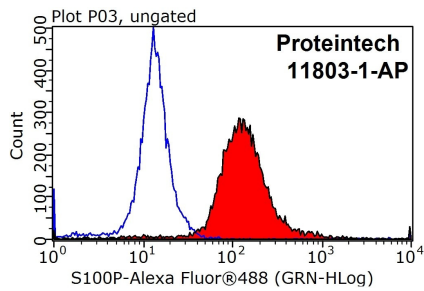
HeLa cells were subjected to SDS PAGE followed by western blot with 11803-1-AP (S100P antibody) at dilution of 1:1000 incubated at room temperature for 1.5 hours.



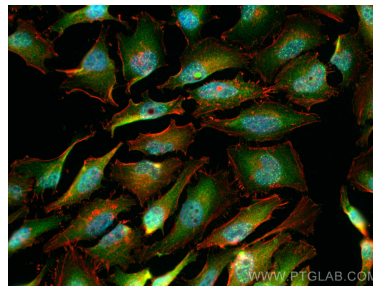
Immunohistochemical analysis of paraffin-embedded human pancreas cancer tissue slide using 11803-1-AP (S100P antibody) at dilution of 1:8000 (under 10x lens). Heat mediated antigen retrieval with Tris-EDTA buffer (pH 9.0).



Immunohistochemical analysis of paraffin-embedded human pancreas cancer tissue slide using 11803-1-AP (S100P antibody) at dilution of 1:8000 (under 40x lens). Heat mediated antigen retrieval with Tris-EDTA buffer (pH 9.0).



1X10⁶ HepG2 cells were stained with 0.2ug S100P antibody (11803-1-AP, red) and control antibody (blue). Fixed with 90% MeOH blocked with 3% BSA (30 min). Alexa Fluor 488-conjugated AffiniPure Goat Anti-Rabbit IgG(H+L) with dilution 1:1000.



Immunofluorescent analysis of (4% PFA) fixed HeLa cells using S100P antibody (11803-1-AP) at dilution of 1:400 and CoraLite@488-Conjugated AffiniPure Goat Anti-Rabbit IgG(H+L), CL594-Phalloidin (red).