

For Research Use Only

NAMPT/PBEF Polyclonal antibody

Catalog Number: 11776-1-AP

Featured Product

49 Publications



Basic Information

Catalog Number:

11776-1-AP

Concentration:

1100 ug/ml

Source:

Rabbit

Isotype:

IgG

Immunogen Catalog Number:

AG2434

GenBank Accession Number:

BC020691

GeneID (NCBI):

10135

UNIPROT ID:

P43490

Full Name:

nicotinamide
phosphoribosyltransferase

Calculated MW:

52 kDa

Observed MW:

50-55 kDa

Purification Method:

Antigen affinity purification

Recommended Dilutions:

WB 1:2000-1:10000

IP 0.5-4.0 ug for 1.0-3.0 mg of total
protein lysate

IHC 1:50-1:500

IF/ICC 1:200-1:800

Applications

Tested Applications:

WB, IHC, IF/ICC, IP, ELISA

Cited Applications:

WB, IHC, IF, IP

Species Specificity:

human, mouse, rat, zebrafish

Cited Species:

human, mouse, rat, zebrafish

**Note-IHC: suggested antigen retrieval with
TE buffer pH 9.0; (*) Alternatively, antigen
retrieval may be performed with citrate
buffer pH 6.0**

Positive Controls:

WB: rat liver tissue, Ramos cells, mouse heart tissue,
HL-60 cells, RAW 264.7 cells, mouse liver tissue,
mouse skeletal muscle tissue

IP: mouse heart tissue,

IHC: human lymphoma tissue,

IF/ICC: HEK-293 cells, HeLa cells, U-87 MG cells

Background Information

Nicotinamide phosphoribosyltransferase (NAMPT) has two usual synonyms termed Visfatin and PBEF. Its primary role is to catalyze the condensation of nicotinamide with 5-phosphoribosyl-1-pyrophosphate to yield nicotinamide mononucleotide, an intermediate in the biosynthesis of NAD, which is the rate limiting component in the mammalian NAD biosynthesis pathway. NAMPT is expressed in large amounts in bone marrow, liver tissue, and muscle tissues. NAMPT inhibits neutrophil apoptosis in experimental inflammation and clinical sepsis. NAMPT levels are altered in plasma of patients with type 2 diabetes mellitus (T2DM), and it is now evidenced that NAMPT may play a role in lipid metabolism.

Notable Publications

Author	Pubmed ID	Journal	Application
Xinhui Liu	34603081	Front Physiol	WB
Anna E Gibson	32908120	Oncogenesis	WB
Xiaohan Jin	36243112	J Biol Chem	WB

Storage

Storage:

Store at -20°C. Stable for one year after shipment.

Storage Buffer:

PBS with 0.02% sodium azide and 50% glycerol pH 7.3.

Aliquoting is unnecessary for -20°C storage

For technical support and original validation data for this product please contact:

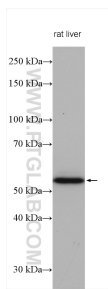
T: 4006900926

E: Proteintech-CN@ptglab.com

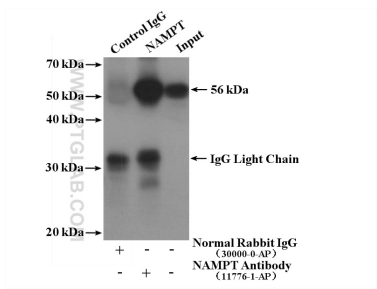
W: ptgcn.com

This product is exclusively available under Proteintech Group brand and is not available to purchase from any other manufacturer.

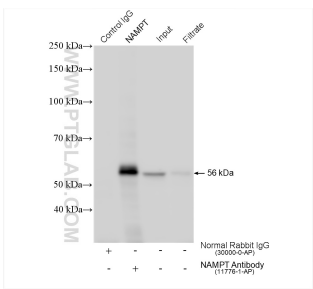
Selected Validation Data



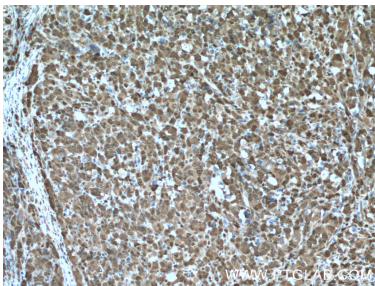
Rat liver lysates were subjected to SDS PAGE followed by western blot with 11776-1-AP (NAMPT/PBEF antibody) at dilution of 1:6000 incubated at room temperature for 1.5 hours.



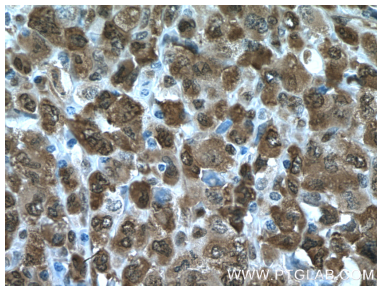
IP result of anti-NAMPT/PBEF (IP:11776-1-AP, 4ug; Detection:11776-1-AP 1:1000) with mouse heart tissue lysate 3720 ug.



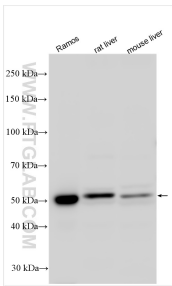
IP result of anti-NAMPT/PBEF (IP:11776-1-AP, 4ug; Detection:11776-1-AP 1:4000) with mouse heart tissue lysate 1560 ug.



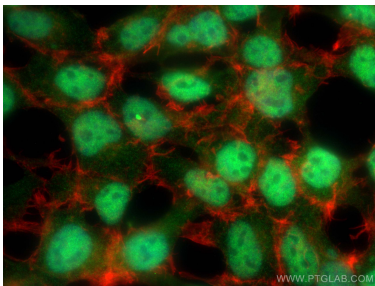
Immunohistochemical analysis of paraffin-embedded human lymphoma tissue slide using 11776-1-AP (NAMPT/PBEF antibody) at dilution of 1:200 (under 10x lens. Heat mediated antigen retrieval with Tris-EDTA buffer (pH 9.0).



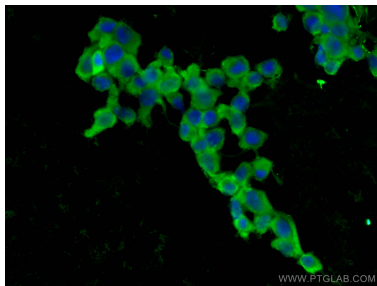
Immunohistochemical analysis of paraffin-embedded human lymphoma tissue slide using 11776-1-AP (NAMPT/PBEF antibody) at dilution of 1:200 (under 40x lens. Heat mediated antigen retrieval with Tris-EDTA buffer (pH 9.0).



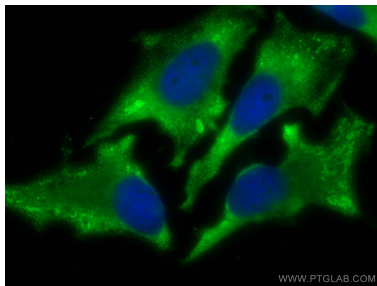
Ramos cells were subjected to SDS PAGE followed by western blot with 11776-1-AP (NAMPT/PBEF antibody) at dilution of 1:6000 incubated at room temperature for 1.5 hours.



Immunofluorescent analysis of (4% PFA) fixed HEK-293 cells using NAMPT/PBEF antibody (11776-1-AP) at dilution of 1:400 and CoraLite@488-Conjugated AffiniPure Goat Anti-Rabbit IgG(H+L), CL594-phalloidin (red).



Immunofluorescent analysis of (-20°C Ethanol) fixed U-87 MG cells using NAMPT/PBEF antibody (11776-1-AP) at dilution of 1:400 and CoraLite@488-Conjugated AffiniPure Goat Anti-Rabbit IgG(H+L).



Immunofluorescent analysis of (-20°C Ethanol) fixed HeLa cells using NAMPT/PBEF antibody (11776-1-AP) at dilution of 1:400 and CoraLite@488-Conjugated AffiniPure Goat Anti-Rabbit IgG(H+L).