

For Research Use Only

# CYP4B1 Polyclonal antibody

Catalog Number: 11771-1-AP

2 Publications



## Basic Information

Catalog Number:

11771-1-AP

Concentration:

500 µg/ml

Source:

Rabbit

Isotype:

IgG

Immunogen Catalog Number:

AG2416

GenBank Accession Number:

BC017758

GeneID (NCBI):

1580

UNIPROT ID:

P13584

Full Name:

cytochrome P450, family 4, subfamily B, polypeptide 1

Calculated MW:

512 aa, 59 kDa

Observed MW:

55-59 kDa

Purification Method:

Antigen affinity purification

Recommended Dilutions:

WB: 1:500-1:1500

IP: 0.5-4.0 µg for 1.0-3.0 mg of total protein lysate

IHC: 1:20-1:200

## Applications

Tested Applications:

WB, IP, IHC, ELISA

Cited Applications:

WB, IHC

Species Specificity:

human, mouse, rat

Cited Species:

human, rat

**Note-IHC: suggested antigen retrieval with TE buffer pH 9.0; (\*) Alternatively, antigen retrieval may be performed with citrate buffer pH 6.0**

Positive Controls:

WB: mouse lung tissue, A549 cells, rat kidney tissue

IP: mouse lung tissue,

IHC: human lung cancer tissue,

## Background Information

### Notable Publications

Author	Pubmed ID	Journal	Application
Shihua Bao	36355621	Hum Reprod	IHC
Ziqi Han	40056338	J Endocrinol Invest	WB, IHC

## Storage

Storage:

Store at -20°C. Stable for one year after shipment.

Storage Buffer:

PBS with 0.02% sodium azide and 50% glycerol, pH7.3

Aliquoting is unnecessary for -20°C storage

For technical support and original validation data for this product please contact:

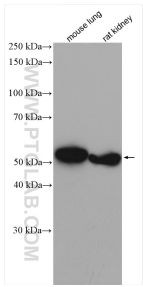
T: 4006900926

E: [Proteintech-CN@ptglab.com](mailto:Proteintech-CN@ptglab.com)

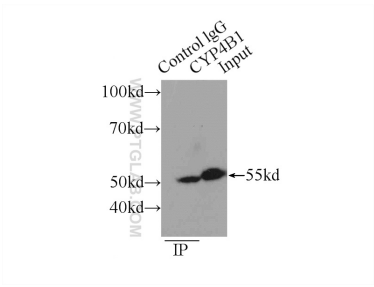
W: [ptgcn.com](http://ptgcn.com)

This product is exclusively available under Proteintech Group brand and is not available to purchase from any other manufacturer.

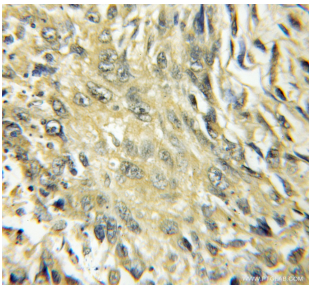
Selected Validation Data



Various lysates were subjected to SDS PAGE followed by western blot with 11771-1-AP (CYP4B1 antibody) at dilution of 1:1500 incubated at room temperature for 1.5 hours.



IP result of anti-CYP4B1 (IP:11771-1-AP, 4ug; Detection:11771-1-AP 1:500) with mouse lung tissue lysate 4000ug.



Immunohistochemical analysis of paraffin-embedded human lung cancer using 11771-1-AP (CYP4B1 antibody) at dilution of 1:50 (under 10x lens).