

For Research Use Only

# ENOPH1 Polyclonal antibody

Catalog Number: 11763-1-AP

Featured Product

2 Publications



## Basic Information

Catalog Number:

11763-1-AP

Size:

300 µg/ml

Source:

Rabbit

Isotype:

IgG

Immunogen Catalog Number:

AG2360

GenBank Accession Number:

BC001317

GeneID (NCBI):

58478

UNIPROT ID:

Q9UHY7

Full Name:

enolase-phosphatase 1

Calculated MW:

13 kDa / 29 kDa

Observed MW:

29-35 kDa

Purification Method:

Antigen affinity purification

Recommended Dilutions:

WB 1:500-1:2000

## Applications

Tested Applications:

WB, ELISA

Cited Applications:

WB, IF

Species Specificity:

human

Cited Species:

human

Positive Controls:

WB : K-562 cells, HL-60 cells

## Background Information

ENOPH1, also named as MASA and MSTP145, belongs to the HAD-like hydrolase superfamily and MasA/MtnC family. ENOPH1 is a newly identified enzyme involved in L-methionine biosynthesis, which is associated with anxiety and depression. Studies have shown that ENOPH1 plays a crucial role in promoting the proliferation and migration of glioma cells (PMID: 32654229). ENOPH1 has 2 isoforms with the molecular mass of 13 and 29 kDa.

## Notable Publications

Author	Pubmed ID	Journal	Application
Li Su	30066900	Oncol Rep	WB
Yuan Zhang	27630541	Front Mol Neurosci	WB, IF

## Storage

Storage:

Store at -20°C. Stable for one year after shipment.

Storage Buffer:

PBS with 0.02% sodium azide and 50% glycerol pH 7.3.

Aliquoting is unnecessary for -20°C storage

For technical support and original validation data for this product please contact:

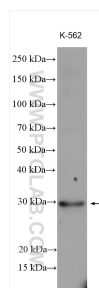
T: 4006900926

E: [Proteintech-CN@ptglab.com](mailto:Proteintech-CN@ptglab.com)

W: [ptgcn.com](http://ptgcn.com)

This product is exclusively available under Proteintech Group brand and is not available to purchase from any other manufacturer.

## Selected Validation Data



K-562 cells were subjected to SDS PAGE followed by western blot with 11763-1-AP (ENOPH1 antibody) at dilution of 1:1000 incubated at room temperature for 1.5 hours.