

For Research Use Only

# IFT81 Polyclonal antibody

Catalog Number: 11744-1-AP

Featured Product

50 Publications



## Basic Information

### Catalog Number:

11744-1-AP

### Concentration:

500 µg/ml

### Source:

Rabbit

### Isotype:

IgG

### Immunogen Catalog Number:

AG2339

### GenBank Accession Number:

BC029349

### GeneID (NCBI):

28981

### UNIPROT ID:

Q8WYAO

### Full Name:

intraflagellar transport 81 homolog  
(Chlamydomonas)

### Calculated MW:

676 aa, 80 kDa

### Observed MW:

75-80 kDa

### Purification Method:

Antigen affinity purification

### Recommended Dilutions:

WB 1:1000-1:8000

IP 0.5-4.0 µg for 1.0-3.0 mg of total  
protein lysate

IHC 1:20-1:200

IF/ICC 1:50-1:500

## Applications

### Tested Applications:

WB, IHC, IF/ICC, IP, ELISA

### Cited Applications:

WB, IHC, IF, CoIP

### Species Specificity:

human, mouse, rat, canine

### Cited Species:

human, mouse, rat

### Positive Controls:

WB : mouse brain tissue, mouse testis tissue, HEK-293  
cells, human brain tissue, rat testis tissue

IP : mouse brain tissue,

IHC : human prostate cancer tissue,

IF/ICC : C2C12 cells, hTERT-RPE1 cells, MDCK cells

**Note-IHC: suggested antigen retrieval with  
TE buffer pH 9.0; (\*) Alternatively, antigen  
retrieval may be performed with citrate  
buffer pH 6.0**

## Background Information

Intraflagellar transport (IFT), mediated by molecular motors and IFT particles, is an important transport process that occurs in the cilium and has been shown to be essential for the assembly and maintenance of cilia and flagella in many organisms. IFT particles are multi-subunit complexes of proteins that function to move non-membrane-bound particles from the cell body to the tip of cilium or flagellum, then return them to the cell body. Transport towards the ciliary tip is regulated by the IFT complex B (IFT-B), consisting of at least 15 IFT proteins, in association with kinesin motors, whereas transport from the ciliary tip back to the base is executed by a dynein motor in association with the IFT complex A (IFT-A), currently known to be composed of six IFT proteins. IFT81 is a subunit of IFT complex B. It may play a role in development of the testis and spermatogenesis. There are some isoforms of IFT81 with 73-78 kDa and 43-50 kDa.

## Notable Publications

Author	Pubmed ID	Journal	Application
Yong Zhang	28964737	Dev Biol	WB
Ivan Duran	27666822	Sci Rep	WB, IF
Malavika Raman	26389662	Nat Cell Biol	WB

## Storage

### Storage:

Store at -20°C. Stable for one year after shipment.

### Storage Buffer:

PBS with 0.02% sodium azide and 50% glycerol, pH7.3

Aliquoting is unnecessary for -20°C storage

For technical support and original validation data for this product please contact:

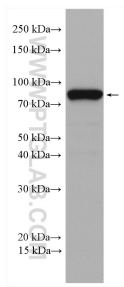
T: 4006900926

E: [Proteintech-CN@ptglab.com](mailto:Proteintech-CN@ptglab.com)

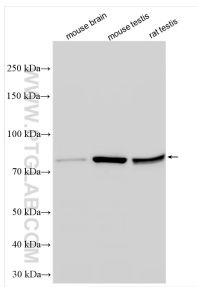
W: [ptgcn.com](http://ptgcn.com)

**This product is exclusively available under Proteintech Group brand and is not available to purchase from any other manufacturer.**

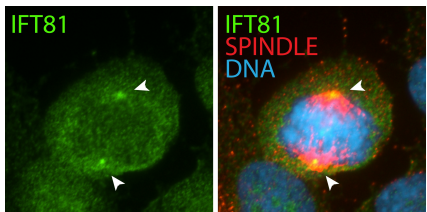
Selected Validation Data



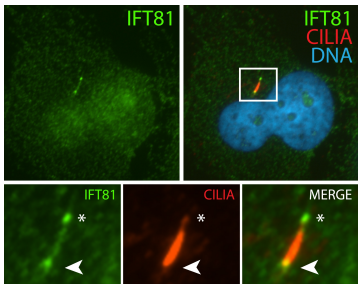
mouse testis tissue were subjected to SDS PAGE followed by western blot with 11744-1-AP (IFT81 antibody) at dilution of 1:600 incubated at room temperature for 1.5 hours.



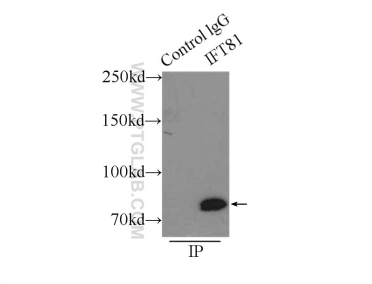
Various lysates were subjected to SDS PAGE followed by western blot with 11744-1-AP (IFT81 antibody) at dilution of 1:4000 incubated at room temperature for 1.5 hours.



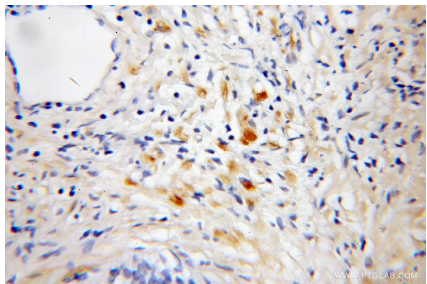
IF result (localization to the spindle poles) of anti-IFT81 (11744-1-AP, 1:50) with metaphase hTERT-RPE1 cells (MeOH fixed) by Dr. Moshe Kim.



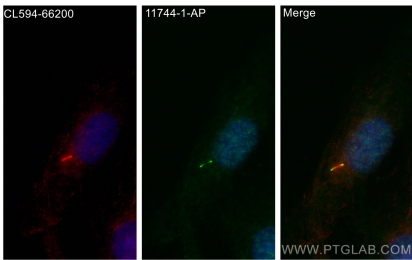
IF result (the base and tip of cilia) of anti-IFT81 (11744-1-AP, 1:50) with serum-starved hTERT-RPE1 (PFA fixed) by Dr. Moshe Kim.



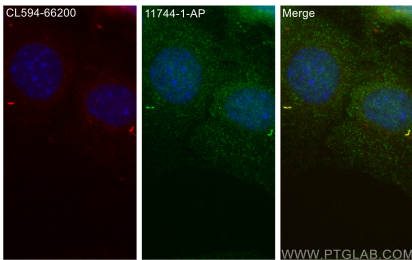
IP result of anti-IFT81 (IP:11744-1-AP, 3ug; Detection:11744-1-AP 1:500) with mouse brain tissue lysate 7500ug.



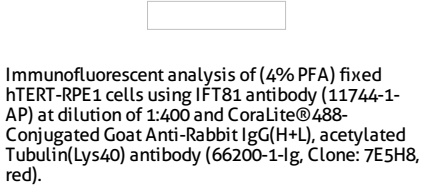
Immunohistochemical analysis of paraffin-embedded human prostate cancer using 11744-1-AP (IFT81 antibody) at dilution of 1:50 (under 10x lens).



Immunofluorescent analysis of (4% PFA) fixed MDCK cells using IFT81 antibody (11744-1-AP) at dilution of 1:200 and CoraLite®488-Conjugated Goat Anti-Rabbit IgG(H+L), CoraLite®594 acetylated Tubulin(Lys40) antibody (CL594-66200, Clone: 7E5H8, red).



Immunofluorescent analysis of (4% PFA) fixed C2C12 cells using IFT81 antibody (11744-1-AP) at dilution of 1:200 and CoraLite®488-Conjugated Goat Anti-Rabbit IgG(H+L), CoraLite®594 acetylated Tubulin(Lys40) antibody (CL594-66200, Clone: 7E5H8, red).



Immunofluorescent analysis of (4% PFA) fixed hTERT-RPE1 cells using IFT81 antibody (11744-1-AP) at dilution of 1:400 and CoraLite®488-Conjugated Goat Anti-Rabbit IgG(H+L), acetylated Tubulin(Lys40) antibody (66200-1-Ig, Clone: 7E5H8, red).