

For Research Use Only

SPRR3 Polyclonal antibody

Catalog Number: 11742-1-AP

Featured Product

9 Publications



Basic Information

Catalog Number:

11742-1-AP

Size:

350 µg/ml

Source:

Rabbit

Isotype:

IgG

Immunogen Catalog Number:

AG2337

GenBank Accession Number:

BC017802

GeneID (NCBI):

6707

UNIPROT ID:

Q9UBC9

Full Name:

small proline-rich protein 3

Calculated MW:

19 kDa

Observed MW:

22-25 kDa

Purification Method:

Antigen affinity purification

Recommended Dilutions:

WB 1:500-1:2000

IP 0.5-4.0 µg for 1.0-3.0 mg of total protein lysate

IHC 1:20-1:200

IF 1:20-1:200

Applications

Tested Applications:

IF/ICC, IHC, IP, WB, ELISA

Cited Applications:

WB, IP, IF, IHC

Species Specificity:

human

Cited Species:

human, rat, mouse

Note-IHC: suggested antigen retrieval with TE buffer pH 9.0; (*) Alternatively, antigen retrieval may be performed with citrate buffer pH 6.0

Positive Controls:

WB : HeLa cells, human liver tissue

IP : COLO 320 cells,

IHC : human colon cancer tissue, human breast cancer tissue

IF : HeLa cells,

Background Information

SPRR3, also named as Esophagin, Cornifin beta and SPRC, belongs to the cornifin (SPRR) family. It is cross-linked envelope protein of keratinocytes. Increased expression of SPRR3 appears to be involved in colorectal tumorigenesis. SPRR3 is a marker for terminal squamous cell differentiation. a potential novel therapeutic target for less advanced stages of Breast Cancer.

Notable Publications

Author	Pubmed ID	Journal	Application
Qin Li	32273714	Onco Targets Ther	WB
Cho Dong-Hyung DH	20379613	Mol Med	WB, IHC
Ji-Eun Bae	30850686	Sci Rep	WB, IF

Storage

Storage:

Store at -20°C. Stable for one year after shipment.

Storage Buffer:

PBS with 0.02% sodium azide and 50% glycerol pH 7.3.

Aliquoting is unnecessary for -20°C storage

For technical support and original validation data for this product please contact:

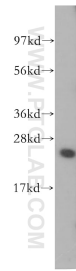
T: 4006900926

E: Proteintech-CN@ptglab.com

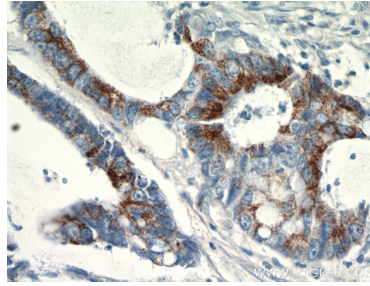
W: ptgcn.com

This product is exclusively available under Proteintech Group brand and is not available to purchase from any other manufacturer.

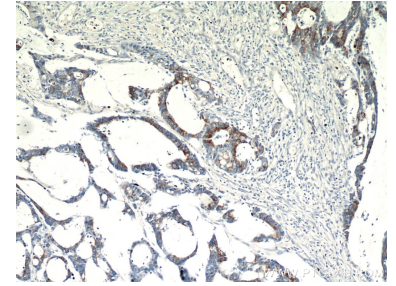
Selected Validation Data



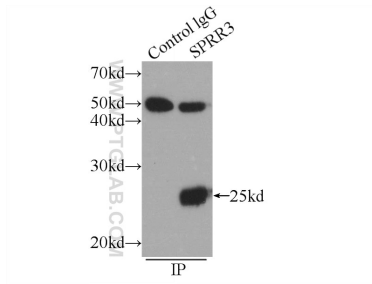
HeLa cells were subjected to SDS PAGE followed by western blot with 11742-1-AP (SPRR3 antibody) at dilution of 1:400 incubated at room temperature for 1.5 hours.



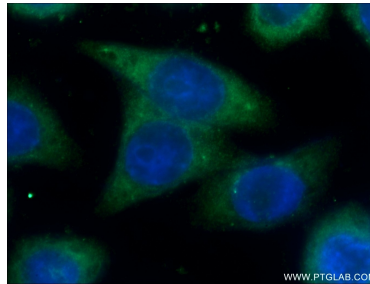
Immunohistochemical analysis of paraffin-embedded human colon cancer using 11742-1-AP (SPRR3 antibody) at dilution of 1:100 (under 40x lens).



Immunohistochemical analysis of paraffin-embedded human colon cancer using 11742-1-AP (SPRR3 antibody) at dilution of 1:100 (under 10x lens).



IP result of anti-SPRR3 (IP:11742-1-AP, 3 μ g; Detection:11742-1-AP 1:500) with COLO 320 cells lysate 1720 μ g.



Immunofluorescent analysis of HeLa cells using 11742-1-AP (SPRR3 antibody) at dilution of 1:50 and Alexa Fluor 488-conjugated AffiniPure Goat Anti-Rabbit IgG(H+L).