

YPEL5 Polyclonal antibody

Catalog Number: 11730-1-AP

3 Publications

Basic Information

Catalog Number:

11730-1-AP

Size:

750 µg/ml

Source:

Rabbit

Isotype:

IgG

Immunogen Catalog Number:

AG2328

GenBank Accession Number:

BC000836

GeneID (NCBI):

51646

UNIPROT ID:

P62699

Full Name:

yippee-like 5 (Drosophila)

Calculated MW:

121 aa, 14 kDa

Observed MW:

14 kDa

Purification Method:

Antigen affinity purification

Recommended Dilutions:

WB 1:1000-1:4000

IHC 1:50-1:500

Applications

Tested Applications:

IHC, WB, ELISA

Cited Applications:

WB, IF

Species Specificity:

human, mouse, rat

Cited Species:

human, zebrafish

Note-IHC: suggested antigen retrieval with TE buffer pH 9.0; (*) Alternatively, antigen retrieval may be performed with citrate buffer pH 6.0

Positive Controls:

WB : mouse brain tissue, mouse testis tissue, rat brain tissue

IHC : mouse testis tissue,

Background Information

YPEL5 (Protein yippee-like 5) belongs to the yippee family and is involved in a certain cell division-related function. During cell cycle, YPEL5 protein is detected at different subcellular localizations; at interphase, it is located in the nucleus and centrosome, then it changes location sequentially to spindle poles, mitotic spindle, and spindle midzone during mitosis, and finally transfers to midbody at cytokinesis (PMID:20580816).

Notable Publications

Author	Pubmed ID	Journal	Application
Dan Zhou	33411363	Mol Oncol	WB
Lalit R Patel	37426340	iScience	WB
Hilliard Austin T AT	22325205	Neuron	WB, IF

Storage

Storage:

Store at -20°C. Stable for one year after shipment.

Storage Buffer:

PBS with 0.02% sodium azide and 50% glycerol pH 7.3.

Aliquoting is unnecessary for -20°C storage

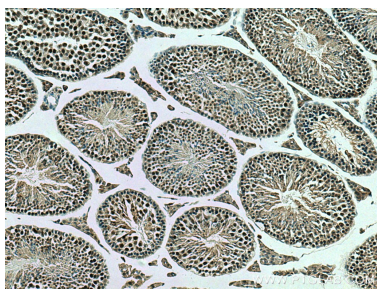
For technical support and original validation data for this product please contact:

T: 4006900926

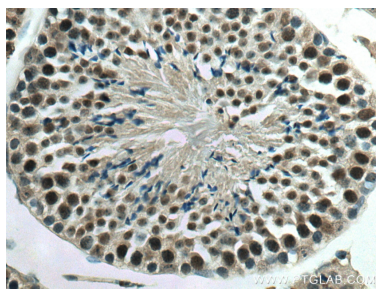
E: Proteintech-CN@ptglab.comW: ptgcn.com

This product is exclusively available under Proteintech Group brand and is not available to purchase from any other manufacturer.

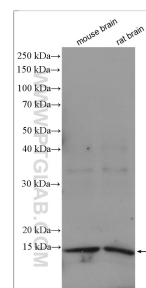
Selected Validation Data



Immunohistochemical analysis of paraffin-embedded mouse testis tissue slide using 11730-1-AP (YPEL5 antibody) at dilution of 1:200 (under 10x lens). Heat mediated antigen retrieval with Tris-EDTA buffer (pH 9.0).



Immunohistochemical analysis of paraffin-embedded mouse testis tissue slide using 11730-1-AP (YPEL5 antibody) at dilution of 1:200 (under 40x lens). Heat mediated antigen retrieval with Tris-EDTA buffer (pH 9.0).



Various lysates were subjected to SDS PAGE followed by western blot with 11730-1-AP (YPEL5 antibody) at dilution of 1:2000 incubated at room temperature for 1.5 hours.