

For Research Use Only

# RAD1 Polyclonal antibody

Catalog Number: 11726-2-AP **5 Publications**



## Basic Information

<b>Catalog Number:</b> 11726-2-AP	<b>GenBank Accession Number:</b> BC006837	<b>Purification Method:</b> Antigen affinity purification
<b>Size:</b> 350 µg/ml	<b>GeneID (NCBI):</b> 5810	<b>Recommended Dilutions:</b> WB 1:500-1:3000
<b>Source:</b> Rabbit	<b>UNIPROT ID:</b> O60671	<b>IP</b> 0.5-4.0 ug for 1.0-3.0 mg of total protein lysate
<b>Isotype:</b> IgG	<b>Full Name:</b> RAD1 homolog (S. pombe)	<b>IHC</b> 1:20-1:200
<b>Immunogen Catalog Number:</b> AG2316	<b>Calculated MW:</b> 32 kDa	<b>IF</b> 1:50-1:500
	<b>Observed MW:</b> 32 kDa	

## Applications

<b>Tested Applications:</b> IF/ICC, IHC, IP, WB, ELISA	<b>Positive Controls:</b> WB : HeLa cells, K-562 cells, L02 cells
<b>Cited Applications:</b> WB	<b>IP :</b> HeLa cells,
<b>Species Specificity:</b> human	<b>IHC :</b> human lymphoma tissue,
<b>Cited Species:</b> human, rat, rainbow trout	<b>IF :</b> HeLa cells,

**Note-IHC: suggested antigen retrieval with TE buffer pH 9.0; (\*) Alternatively, antigen retrieval may be performed with citrate buffer pH 6.0**

## Background Information

RAD1, cell cycle checkpoint protein, is a component of a heterotrimeric cell cycle checkpoint 9-1-1 complex, that is activated to stop cell cycle progression in response to DNA damage or incomplete DNA replication. RAD1, HUS1 and RAD9 are central components of a DNA damage-responsive protein complex. Testis-specific disruption of RAD1 in mice resulted in defective double-strand break repair, depletion of germ cells and infertility (PMID: 35133274). RAD1 has 3 isoforms produced by alternative splicing.

## Notable Publications

Author	Pubmed ID	Journal	Application
Xiaoli Xu	30184152	J Mol Cell Biol	WB
Bin Chen	35152263	Oncogene	WB
Rongyi Shi	32783654	Am J Physiol Cell Physiol	WB

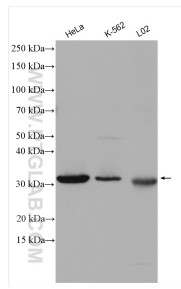
## Storage

**Storage:**  
Store at -20°C. Stable for one year after shipment.  
**Storage Buffer:**  
PBS with 0.02% sodium azide and 50% glycerol pH 7.3.  
Aliquoting is unnecessary for -20°C storage

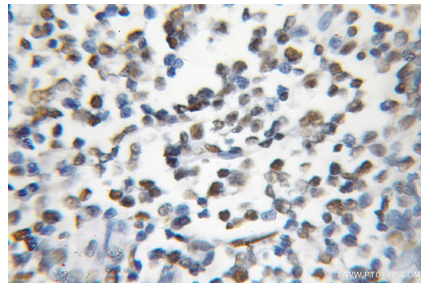
For technical support and original validation data for this product please contact:  
T: 4006900926 E: Proteintech-CN@ptglab.com W: ptgcn.com

This product is exclusively available under Proteintech Group brand and is not available to purchase from any other manufacturer.

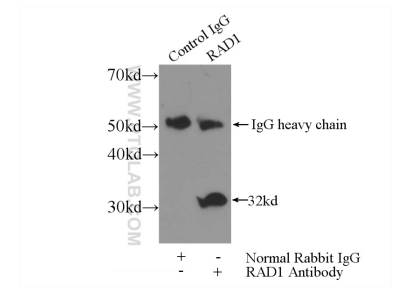
## Selected Validation Data



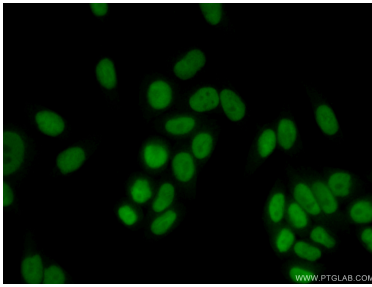
Various lysates were subjected to SDS PAGE followed by western blot with 11726-2-AP (RAD1 antibody) at dilution of 1:1500 incubated at room temperature for 1.5 hours.



Immunohistochemical analysis of paraffin-embedded human lymphoma using 11726-2-AP (RAD1 antibody) at dilution of 1:50 (under 10x lens).



IP result of anti-RAD1 (IP:11726-2-AP, 3ug; Detection:11726-2-AP 1:300) with HeLa cells lysate 3200ug.



Immunofluorescent analysis of (4% PFA) fixed HeLa cells using 11726-2-AP (RAD1 antibody) at dilution of 1:50 and Alexa Fluor 488-conjugated AffiniPure Goat Anti-Rabbit IgG(H+L).