

For Research Use Only

Maspin Polyclonal antibody

Catalog Number: 11722-1-AP **4 Publications**



Basic Information

Catalog Number: 11722-1-AP	GenBank Accession Number: BC020713	Purification Method: Antigen affinity purification
Size: 300 µg/ml	GeneID (NCBI): 5268	Recommended Dilutions: WB 1:500-1:3000 IHC 1:50-1:500 IF 1:50-1:500
Source: Rabbit	UNIPROT ID: P36952	
Isotype: IgG	Full Name: serpin peptidase inhibitor, clade B (ovalbumin), member 5	
Immunogen Catalog Number: AG2304	Calculated MW: 375 aa, 42 kDa	
	Observed MW: 42 kDa	

Applications

Tested Applications: FC, IF/ICC, IHC, WB, ELISA	Positive Controls: WB : HepG2 cells, A431 cells, HeLa cells IHC : human lung cancer tissue, human breast cancer tissue, human pancreas tissue IF : A431 cells,
Cited Applications: WB, IF, IHC	
Species Specificity: human	
Cited Species: human	
Note-IHC: suggested antigen retrieval with TE buffer pH 9.0; (*) Alternatively, antigen retrieval may be performed with citrate buffer pH 6.0	

Background Information

SERPINB5, also named as PI-5, Maspin and Serpin B5, belongs to the serpin family and Ov-serpin subfamily. It is a tumor suppressor. It blocks the growth, invasion, and metastatic properties of mammary tumors. As it does not undergo the S (stressed) to R (relaxed) conformational transition characteristic of active serpins, SERPINB5 exhibits no serine protease inhibitory activity.

Notable Publications

Author	Pubmed ID	Journal	Application
Chang-Fu Yang	24262659	Cancer Lett	WB
Jinfeng Zhu	35614040	Cell Death Dis	IF
Hengwei Zhang	28927140	Oncol Lett	WB

Storage

Storage:
Store at -20°C. Stable for one year after shipment.
Storage Buffer:
PBS with 0.02% sodium azide and 50% glycerol pH 7.3.
Aliquoting is unnecessary for -20°C storage

For technical support and original validation data for this product please contact:

T: 4006900926

E: Proteintech-CN@ptglab.com

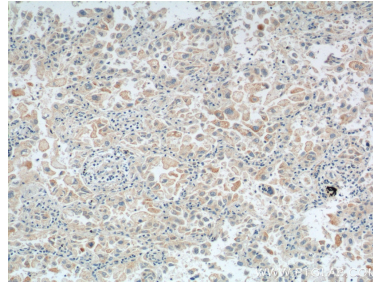
W: ptgcn.com

This product is exclusively available under Proteintech Group brand and is not available to purchase from any other manufacturer.

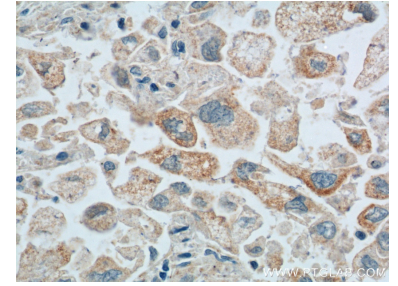
Selected Validation Data



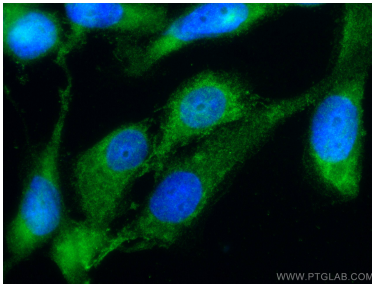
HepG2 cells were subjected to SDS PAGE followed by western blot with 11722-1-AP (Maspin antibody) at dilution of 1:500 incubated at room temperature for 1.5 hours.



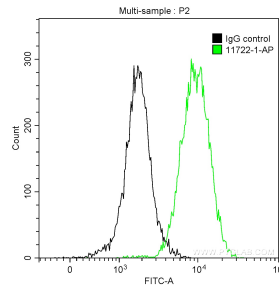
Immunohistochemical analysis of paraffin-embedded human lung cancer tissue slide using 11722-1-AP (Maspin antibody at dilution of 1:200 (under 10x lens). Heat mediated antigen retrieval with Tris-EDTA buffer (pH 9.0).



Immunohistochemical analysis of paraffin-embedded human lung cancer tissue slide using 11722-1-AP (Maspin antibody at dilution of 1:200 (under 40x lens). Heat mediated antigen retrieval with Tris-EDTA buffer (pH 9.0).



Immunofluorescent analysis of (-20°C Ethanol) fixed A431 cells using Maspin antibody (11722-1-AP) at dilution of 1:200 and CoraLite®488-Conjugated AffiniPure Goat Anti-Rabbit IgG(H+L).



1x10⁶ A431 cells were intracellularly stained with 0.5 ug Anti-Human Maspin (11722-1-AP) and CoraLite®488-Conjugated AffiniPure Goat Anti-Rabbit IgG(H+L) at dilution 1:1000 (green), and 0.5 ug Control Antibody. Cells were fixed with 90% MeOH .