

For Research Use Only

RAB13 Polyclonal antibody

Catalog Number: 11718-1-AP



Basic Information

Catalog Number:

11718-1-AP

Size:

400 ug/ml

Source:

Rabbit

Isotype:

IgG

Immunogen Catalog Number:

AG2292

GenBank Accession Number:

BC000799

GeneID (NCBI):

5872

UNIPROT ID:

P51153

Full Name:

RAB13, member RAS oncogene family

Calculated MW:

203 aa, 23 kDa

Observed MW:

23 kDa

Purification Method:

Antigen affinity purification

Recommended Dilutions:

WB 1:500-1:3000

IF/ICC 1:200-1:800

Applications

Tested Applications:

WB, IF/ICC, ELISA

Species Specificity:

human, mouse, rat

Positive Controls:

WB : HeLa cells, mouse colon tissue, mouse lung tissue, rat colon tissue, rat lung tissue

IF/ICC : HeLa cells,

Background Information

RAB13 (Ras-related protein Rab-13) is also named as GIG4. Rab13 is a member of the Rab GTPase family. RAB13 is highly expressed in malignant cells. Rab13 was highly expressed in BCSC of triple-negative breast cancer (TNBC) (PMID: 35395074). RAB13 is involved in a number of processes in LIHC, including MTORC1 signaling, MYC targets v1, G2M checkpoint, MITOTIC spindle, DNA repair, P53 pathway, glycolysis, PI3K-AKT-MTOR signaling, etc (PMID: 37803063). RAB13 enhances its circulation to the plasma membrane to promote breast cancer invasion. By influencing the tumor microenvironment, RAB13 maintains breast cancer stem cells (PMID: 37803063).

Storage

Storage:

Store at -20°C. Stable for one year after shipment.

Storage Buffer:

PBS with 0.02% sodium azide and 50% glycerol pH 7.3.

Aliquoting is unnecessary for -20°C storage

For technical support and original validation data for this product please contact:

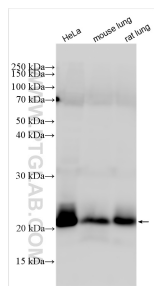
T: 4006900926

E: Proteintech-CN@ptglab.com

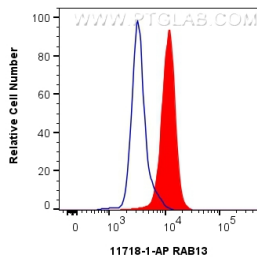
W: ptgcn.com

This product is exclusively available under Proteintech Group brand and is not available to purchase from any other manufacturer.

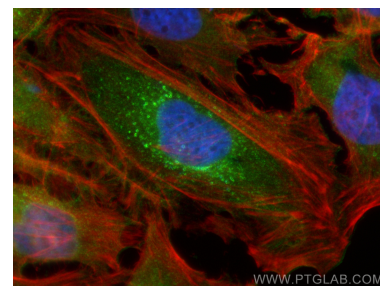
Selected Validation Data



Various lysates were subjected to SDS PAGE followed by western blot with 11718-1-AP (RAB13 antibody) at dilution of 1:1500 incubated at room temperature for 1.5 hours.



1x10⁶ K-562 cells were intracellularly stained with 0.4 ug RAB13 Polyclonal antibody (11718-1-AP) and CoraLite® 488-Conjugated AffiniPure Goat Anti-Rabbit IgG(H+L) (SA00013-2)(red), or 0.4 ug Rabbit IgG control Rabbit PolyAb (30000-0-AP) (blue). Cells were fixed with 4% PFA and permeabilized with Flow Cytometry Perm Buffer (PF00011-C).



Immunofluorescent analysis of (4% PFA) fixed HeLa cells using RAB13 antibody (11718-1-AP) at dilution of 1:400 and Multi-rAb CoraLite® Plus 488-Goat Anti-Rabbit Recombinant Secondary Antibody (H+L) (RGAR002), CL594-phalloidin (red).