

For Research Use Only

# MCM5 Polyclonal antibody

Catalog Number: 11703-1-AP

20 Publications



## Basic Information

### Catalog Number:

11703-1-AP

### Size:

700 ug/ml

### Source:

Rabbit

### Isotype:

IgG

### Immunogen Catalog Number:

AG2271

### GenBank Accession Number:

BC000142

### GeneID (NCBI):

4174

### UNIPROT ID:

P33992

### Full Name:

minichromosome maintenance  
complex component 5

### Calculated MW:

82 kDa

### Observed MW:

82-88 kDa

### Purification Method:

Antigen affinity purification

### Recommended Dilutions:

WB 1:2000-1:16000

IP 0.5-4.0 ug for 1.0-3.0 mg of total  
protein lysate

IHC 1:20-1:200

IF/ICC 1:400-1:1600

## Applications

### Tested Applications:

WB, IHC, IF/ICC, IP, ELISA

### Cited Applications:

WB, IHC, IF, IP, CoIP, RIP

### Species Specificity:

human, mouse, rat

### Cited Species:

human, mouse

**Note-IHC: suggested antigen retrieval with  
TE buffer pH 9.0; (\*) Alternatively, antigen  
retrieval may be performed with citrate  
buffer pH 6.0**

### Positive Controls:

WB : A375 cells, HeLa cells, Jurkat cells, mouse thymus  
tissue, rat thymus tissue

IP : Jurkat cells,

IHC : human lymphoma tissue,

IF/ICC : HeLa cells,

## Background Information

Minichromosome maintenance, *S. Cerevisiae*, homolog of 5(MCM5), one component of the complex of MCM2-7, which is the putative replicative essential for once per cell cycle DNA replication initiation and elongation in eukaryotic cells. The MCM complex form a hexameric ring through the interaction surfaces of two neighboring subunits.

## Notable Publications

Author	Pubmed ID	Journal	Application
Yi-Zhen Liu	29151950	J Cancer	IHC
Wenchao Zhao	36428700	Cancers (Basel)	IHC
Xiaonan Sheng	34162418	J Exp Clin Cancer Res	IF, WB

## Storage

### Storage:

Store at -20°C. Stable for one year after shipment.

### Storage Buffer:

PBS with 0.02% sodium azide and 50% glycerol pH 7.3.

Aliquoting is unnecessary for -20°C storage

For technical support and original validation data for this product please contact:

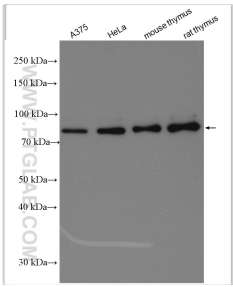
T: 4006900926

E: [Proteintech-CN@ptglab.com](mailto:Proteintech-CN@ptglab.com)

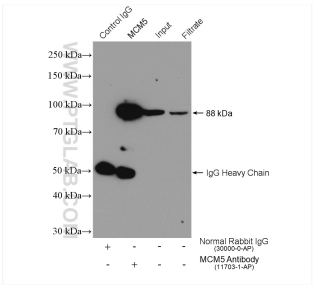
W: [ptgcn.com](http://ptgcn.com)

**This product is exclusively available under Proteintech Group brand and is not available to purchase from any other manufacturer.**

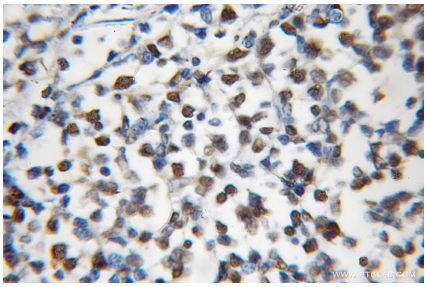
Selected Validation Data



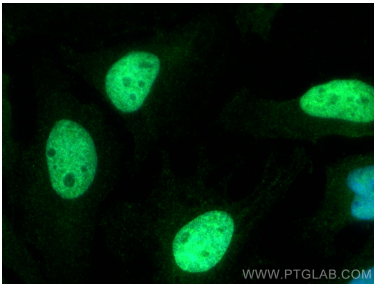
Various lysates were subjected to SDS PAGE followed by western blot with 11703-1-AP (MCM5 antibody) at dilution of 1:8000 incubated at room temperature for 1.5 hours.



IP result of anti-MCM5 (IP:11703-1-AP, 4ug; Detection:11703-1-AP 1:4000) with Jurkat cells lysate 2400 ug.



Immunohistochemical analysis of paraffin-embedded human lymphoma using 11703-1-AP (MCM5 antibody) at dilution of 1:100 (under 10x lens).



Immunofluorescent analysis of (4% PFA) fixed HeLa cells using MCM5 antibody (11703-1-AP) at dilution of 1:800 and CoraLite®488-Conjugated AffiniPure Goat Anti-Rabbit IgG(H+L).