

For Research Use Only

FKBP2 Polyclonal antibody

Catalog Number: 11700-1-AP

2 Publications



Basic Information

Catalog Number:

11700-1-AP

Size:

450 ug/ml

Source:

Rabbit

Isotype:

IgG

Immunogen Catalog Number:

AG2255

GenBank Accession Number:

BC003384

GeneID (NCBI):

2286

UNIPROT ID:

P26885

Full Name:

FK506 binding protein 2, 13kDa

Calculated MW:

142 aa, 16 kDa

Observed MW:

13-16 kDa

Purification Method:

Antigen affinity purification

Recommended Dilutions:

WB 1:500-1:1000

IHC 1:50-1:500

Applications

Tested Applications:

WB, IHC, ELISA

Cited Applications:

WB

Species Specificity:

human, mouse

Cited Species:

human, mouse

Note-IHC: suggested antigen retrieval with TE buffer pH 9.0; (*) Alternatively, antigen retrieval may be performed with citrate buffer pH 6.0

Positive Controls:

WB : mouse cerebellum tissue, HeLa cells, MCF-7 cells

IHC : human prostate cancer tissue,

Background Information

FKBP2 is also named as FKBP13 and belongs to the FKBP-type PPIase family. It catalyzes the cis-trans isomerization of proline imidic peptide bonds in oligopeptides. FKBP2 has a 21-amino acid signal peptide and appears to be membrane-associated(PMID:1713687). It is localized to the lumen of the endoplasmic reticulum (ER). FKBP12 and FKBP13 are highly similar proteins, of molecular masses 12 kDa and 13 kDa respectively, with approx.43 % amino acid identity. The strong homology between FKBP12 and FKBP13 suggests that they may share similar biological functions, although, apart from rotamase activity, details relating to the function of either protein are scant(PMID:8373365).

Notable Publications

Author	Pubmed ID	Journal	Application
Richard E Mains	29788427	Endocrinology	WB
Vishwanatha K S Rao	34061983	J Cell Physiol	WB

Storage

Storage:

Store at -20°C. Stable for one year after shipment.

Storage Buffer:

PBS with 0.02% sodium azide and 50% glycerol pH 7.3.

Aliquoting is unnecessary for -20°C storage

For technical support and original validation data for this product please contact:

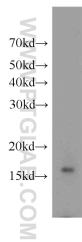
T: 4006900926

E: Proteintech-CN@ptglab.com

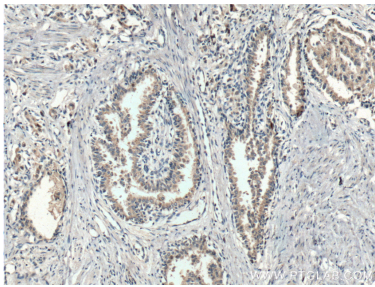
W: ptgcn.com

This product is exclusively available under Proteintech Group brand and is not available to purchase from any other manufacturer.

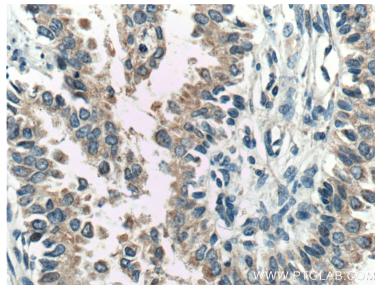
Selected Validation Data



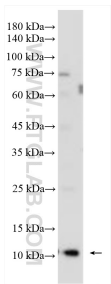
mouse cerebellum tissue were subjected to SDS PAGE followed by western blot with 11700-1-AP (FKBP2 antibody) at dilution of 1:500 incubated at room temperature for 1.5 hours.



Immunohistochemical analysis of paraffin-embedded human prostate cancer tissue slide using 11700-1-AP (FKBP2 Antibody) at dilution of 1:200 (under 10x lens). Heat mediated antigen retrieval with Tris-EDTA buffer (pH 9.0).



Immunohistochemical analysis of paraffin-embedded human prostate cancer tissue slide using 11700-1-AP (FKBP2 Antibody) at dilution of 1:200 (under 40x lens). Heat mediated antigen retrieval with Tris-EDTA buffer (pH 9.0).



HeLa cells were subjected to SDS PAGE followed by western blot with 11700-1-AP (FKBP2 antibody) at dilution of 1:500 incubated at room temperature for 1.5 hours.