

For Research Use Only

# GNG2 Polyclonal antibody

Catalog Number: 11693-1-AP

Featured Product

3 Publications



## Basic Information

Catalog Number:

11693-1-AP

Size:

450 µg/ml

Source:

Rabbit

Isotype:

IgG

Immunogen Catalog Number:

AG2307

GenBank Accession Number:

BC020774

GeneID (NCBI):

54331

UNIPROT ID:

P59768

Full Name:

guanine nucleotide binding protein (G protein), gamma 2

Calculated MW:

71 aa, 8 kDa

Observed MW:

8 kDa

Purification Method:

Antigen affinity purification

Recommended Dilutions:

WB 1:1000-1:6000

## Applications

Tested Applications:

WB, ELISA

Cited Applications:

WB, IHC

Species Specificity:

mouse, rat, human

Cited Species:

human, mouse

Positive Controls:

WB: mouse brain tissue, rat brain tissue

## Background Information

G $\gamma$  2 subunit (Gng2/GNG2) is one of subunits of the G $\beta$   $\gamma$ -dimer composing heterotrimeric G protein with a G $\alpha$  - subunit. Heterotrimeric G protein has been reported to be involved in various biological activities including cell proliferation, differentiation, invasion and angiogenesis. It is expressed in a range of foetal tissues as well as adult testis, adrenal gland, brain, white blood cells and lung.

## Notable Publications

Author	Pubmed ID	Journal	Application
Yajima Ichiro I	22679562	Am J Cancer Res	WB,IHC
Yajima Ichiro I	23031273	J Dermatol Sci	WB
Ichiro Yajima	24660107	Am J Cancer Res	WB

## Storage

Storage:

Store at -20°C. Stable for one year after shipment.

Storage Buffer:

PBS with 0.02% sodium azide and 50% glycerol pH 7.3.

Aliquoting is unnecessary for -20°C storage

For technical support and original validation data for this product please contact:

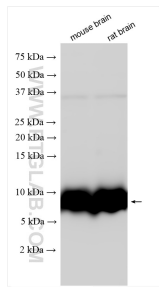
T: 4006900926

E: Proteintech-CN@ptglab.com

W: ptgcn.com

This product is exclusively available under Proteintech Group brand and is not available to purchase from any other manufacturer.

## Selected Validation Data



Various lysates were subjected to SDS PAGE followed by western blot with 11693-1-AP (GNG2 antibody) at dilution of 1:3000 incubated at room temperature for 1.5 hours.