

For Research Use Only

# SERF2 Polyclonal antibody

Catalog Number: 11691-1-AP

Featured Product

3 Publications



## Basic Information

### Catalog Number:

11691-1-AP

### Size:

260 ug/ml

### Source:

Rabbit

### Isotype:

IgG

### Immunogen Catalog Number:

AG2305

### GenBank Accession Number:

BC022326

### GeneID (NCBI):

10169

### UNIPROT ID:

P84101

### Full Name:

small EDRK-rich factor 2

### Calculated MW:

59 aa, 7 kDa

### Purification Method:

Antigen affinity purification

### Recommended Dilutions:

WB 1:500-1:1000

IP 0.5-4.0 ug for 1.0-3.0 mg of total protein lysate

IHC 1:50-1:500

IF/ICC 1:50-1:500

## Applications

### Tested Applications:

WB, IHC, IF/ICC, IP, ELISA

### Cited Applications:

WB, IF

### Species Specificity:

human

### Cited Species:

human, mouse

**Note-IHC: suggested antigen retrieval with TE buffer pH 9.0; (\*) Alternatively, antigen retrieval may be performed with citrate buffer pH 6.0**

### Positive Controls:

WB : HepG2 cells,

IP : HepG2 cells,

IHC : human skin cancer tissue,

IF/ICC : A549 cells, MCF-7 cells

## Background Information

SERF2 Belongs to the SERF family. The antibody is specific to SERF2.

## Notable Publications

Author	Pubmed ID	Journal	Application
Karen Cleverley	33713180	Mamm Genome	WB
Bikash R Sahoo	39554013	bioRxiv	IF
Esther Stroo	37130781	Life Sci Alliance	WB

## Storage

### Storage:

Store at -20°C. Stable for one year after shipment.

### Storage Buffer:

PBS with 0.02% sodium azide and 50% glycerol pH 7.3.

Aliquoting is unnecessary for -20°C storage

For technical support and original validation data for this product please contact:

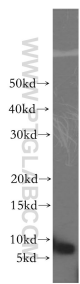
T: 4006900926

E: [Proteintech-CN@ptglab.com](mailto:Proteintech-CN@ptglab.com)

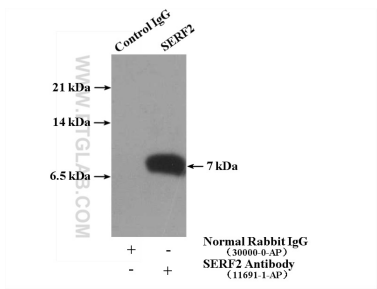
W: [ptgcn.com](http://ptgcn.com)

This product is exclusively available under Proteintech Group brand and is not available to purchase from any other manufacturer.

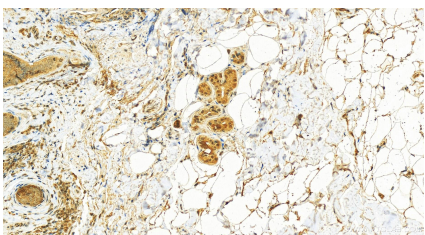
Selected Validation Data



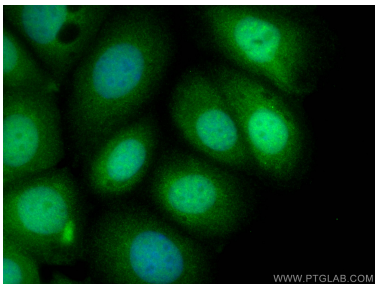
HepG2 cells were subjected to SDS PAGE followed by western blot with 11691-1-AP (SERF2 antibody) at dilution of 1:500 incubated at room temperature for 1.5 hours.



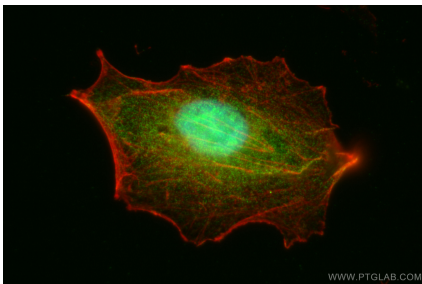
IP result of anti-SERF2 (IP:11691-1-AP, 4ug; Detection:11691-1-AP 1:500) with HepG2 cells lysate 4000ug.



Immunohistochemical analysis of paraffin-embedded skin cancer slide using 11691-1-AP (SERF2 antibody) at dilution of 1:100 (under 20x lens). Heat mediated antigen retrieval with Tris-EDTA buffer (pH 9.0).



Immunofluorescent analysis of (4% PFA) fixed MCF-7 cells using SERF2 antibody (11691-1-AP) at dilution of 1:400 and CoraLite®488-Conjugated AffiniPure Goat Anti-Rabbit IgG(H+L).



Immunofluorescent analysis of (4% PFA) fixed A549 cells using SERF2 antibody (11691-1-AP) at dilution of 1:200 and CoraLite®488-Conjugated AffiniPure Goat Anti-Rabbit IgG(H+L), CL594-phalloidin (red).