

For Research Use Only

PSMB6 Polyclonal antibody

Catalog Number: 11684-2-AP **4 Publications**



Basic Information

Catalog Number: 11684-2-AP	GenBank Accession Number: BC000835	Purification Method: Antigen affinity purification
Size: 450 µg/ml	GeneID (NCBI): 5694	Recommended Dilutions: WB 1:500-1:2000 IHC 1:50-1:500 IF 1:50-1:500
Source: Rabbit	UNIPROT ID: P28072	
Isotype: IgG	Full Name: proteasome (prosome, macropain) subunit, beta type, 6	
Immunogen Catalog Number: AG2296	Calculated MW: 239 aa, 25 kDa	
	Observed MW: 25 kDa	

Applications

Tested Applications:
IF/ICC, IHC, WB, ELISA

Cited Applications:
WB

Species Specificity:
human, mouse, rat

Cited Species:
rat, mouse

Note-IHC: suggested antigen retrieval with TE buffer pH 9.0; (*) Alternatively, antigen retrieval may be performed with citrate buffer pH 6.0

Positive Controls:

WB: HeLa cells, Caco-2 cells, fetal human brain tissue, human liver tissue, mouse brain tissue, rat brain tissue

IHC: human colon cancer tissue, human gliomas tissue

IF: HeLa cells,

Background Information

PSMB6 (Proteasome subunit beta type-6) is also named as LMPY, Y and belongs to the peptidase T1B family. The proteasome is a multicatalytic proteinase complex which is characterized by its ability to cleave peptides with Arg, Phe, Tyr, Leu, and Glu adjacent to the leaving group at neutral or slightly basic pH. It may also catalyze basal processing of intracellular antigens. It can be up-regulated in anaplastic thyroid cancer cell lines and down-regulated by IFNG/IFN-gamma (at protein level) (PMID:8066462;15613457).

Notable Publications

Author	Pubmed ID	Journal	Application
Xin Xie	35710020	Biochem Pharmacol	WB
Wenjin Guo	29723850	Cell Physiol Biochem	WB
Xinzhi Li	37777158	J Biol Chem	WB

Storage

Storage:

Store at -20°C. Stable for one year after shipment.

Storage Buffer:

PBS with 0.02% sodium azide and 50% glycerol pH 7.3.

Aliquoting is unnecessary for -20°C storage

For technical support and original validation data for this product please contact:

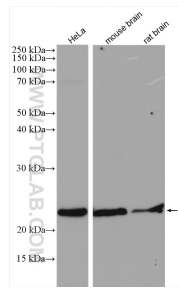
T: 4006900926

E: Proteintech-CN@ptglab.com

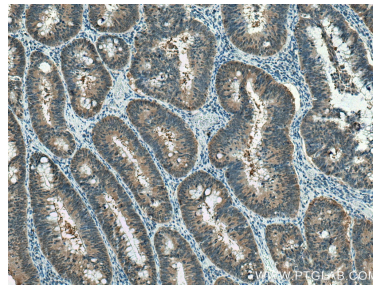
W: ptgcn.com

This product is exclusively available under Proteintech Group brand and is not available to purchase from any other manufacturer.

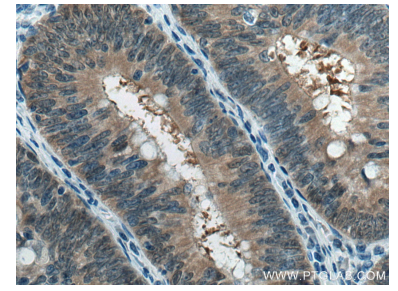
Selected Validation Data



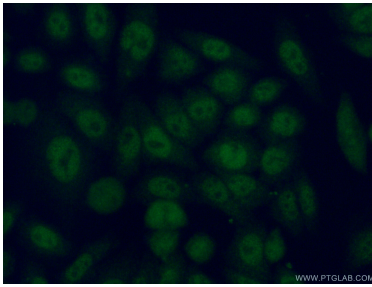
Various lysates were subjected to SDS PAGE followed by western blot with 11684-2-AP (PSMB6 antibody) at dilution of 1:1000 incubated at room temperature for 1.5 hours.



Immunohistochemical analysis of paraffin-embedded human colon cancer tissue slide using 11684-2-AP (PSMB6 antibody) at dilution of 1:200 (under 10x lens). Heat mediated antigen retrieval with Tris-EDTA buffer (pH 9.0).



Immunohistochemical analysis of paraffin-embedded human colon cancer tissue slide using 11684-2-AP (PSMB6 antibody) at dilution of 1:200 (under 40x lens). Heat mediated antigen retrieval with Tris-EDTA buffer (pH 9.0).



Immunofluorescent analysis of (4% PFA) fixed HeLa cells using 11684-2-AP (PSMB6 antibody) at dilution of 1:50 and Alexa Fluor 488-conjugated AffiniPure Goat Anti-Rabbit IgG(H+L).