

For Research Use Only

SUGT1 Polyclonal antibody

Catalog Number: 11675-1-AP

6 Publications



Basic Information

Catalog Number:

11675-1-AP

Size:

500 µg/ml

Source:

Rabbit

Isotype:

IgG

Immunogen Catalog Number:

AG2275

GenBank Accession Number:

BC000911

GeneID (NCBI):

10910

UNIPROT ID:

Q9Y2Z0

Full Name:

SGT1, suppressor of G2 allele of SKP1
(S. cerevisiae)

Calculated MW:

41 kDa

Observed MW:

38 kDa and 41 kDa

Purification Method:

Antigen affinity purification

Recommended Dilutions:

WB 1:1000-1:4000

IP 0.5-4.0 µg for 1.0-3.0 mg of total
protein lysate

IHC 1:20-1:200

IF/ICC 1:50-1:500

Applications

Tested Applications:

WB, IHC, IF/ICC, IP, ELISA

Cited Applications:

WB, IHC

Species Specificity:

human

Cited Species:

human, mouse

**Note-IHC: suggested antigen retrieval with
TE buffer pH 9.0; (*) Alternatively, antigen
retrieval may be performed with citrate
buffer pH 6.0**

Positive Controls:

WB: Jurkat cells, HeLa cells

IP: HEK-293 cells,

IHC: human pancreas cancer tissue,

IF/ICC: A431 cells,

Background Information

Notable Publications

Author	Pubmed ID	Journal	Application
H Ogi	25985210	Oncogenesis	IHC
Xueyan Shi	35720321	Front Immunol	WB
Agnieszka Góral	27249023	PLoS One	WB

Storage

Storage:

Store at -20°C. Stable for one year after shipment.

Storage Buffer:

PBS with 0.02% sodium azide and 50% glycerol pH 7.3.

Aliquoting is unnecessary for -20°C storage

For technical support and original validation data for this product please contact:

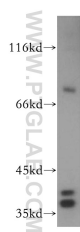
T: 4006900926

E: Proteintech-CN@ptglab.com

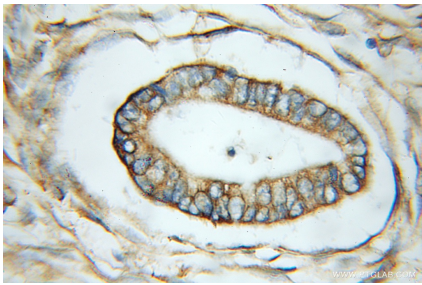
W: ptgcn.com

This product is exclusively available under Proteintech Group brand and is not available to purchase from any other manufacturer.

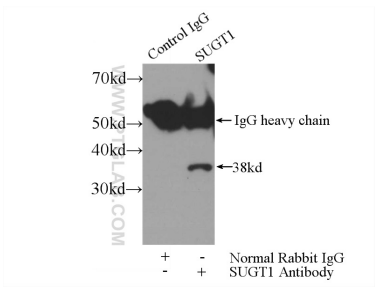
Selected Validation Data



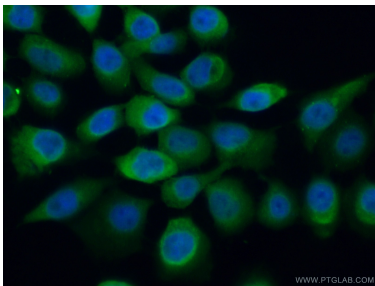
Jurkat cells were subjected to SDS PAGE followed by western blot with 11675-1-AP (SUGT1 antibody) at dilution of 1:300 incubated at room temperature for 1.5 hours.



Immunohistochemical analysis of paraffin-embedded human pancreas cancer using 11675-1-AP (SUGT1 antibody) at dilution of 1:50 (under 10x lens).



IP result of anti-SUGT1 (IP:11675-1-AP, 3ug; Detection:11675-1-AP 1:500) with HEK-293 cells lysate 3200ug.



Immunofluorescent analysis of (4% PFA) fixed A431 cells using 11675-1-AP (SUGT1 antibody) at dilution of 1:50 and Alexa Fluor 488-conjugated Goat Anti-Rabbit IgG(H+L).