

For Research Use Only

PDLIM1/CLP36 Polyclonal antibody, PBS Only

Catalog Number: 11674-1-PBS

Featured Product



Basic Information

Catalog Number:

11674-1-PBS

Source:

Rabbit

Isotype:

IgG

Immunogen Catalog Number:

AG2274

GenBank Accession Number:

BC000915

GeneID (NCBI):

9124

UNIPROT ID:

O00151

Full Name:

PDZ and LIM domain 1

Calculated MW:

329 aa, 36 kDa

Observed MW:

36 kDa

Purification Method:

Antigen affinity purification

Applications

Tested Applications:

WB, IHC, IF/ICC, IP, Indirect ELISA

Species Specificity:

human, mouse, rat

Background Information

PDLIM1, also named as CLIM1, CLP-36, CLP36, hCLIM1 and Elfin, is a member of the actinin-associated LIM protein (ALP)/enigma protein family, plays a role in neurite outgrowth in the peripheral nervous system. It is a cytoskeletal protein that may act as an adapter that brings other proteins (like kinases) to the cytoskeleton. PDLIM1 and PALLD formed a complex in the dorsal root ganglion (DRG) and PDLIM1 and PALLD were colocalized in the neurites and cell bodies of primary DRG neurons. PDLIM1 may interact with PALLD to influence neurite outgrowth during sciatic nerve regeneration. (PMID: 20381583)

Storage

Storage:

Store at -80°C.

The product is shipped with ice packs. Upon receipt, store it immediately at -80°C

Storage Buffer:

PBS only, pH7.3

For technical support and original validation data for this product please contact:

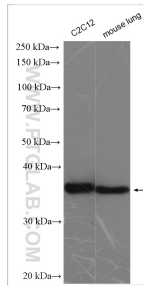
T: 4006900926

E: Proteintech-CN@ptglab.com

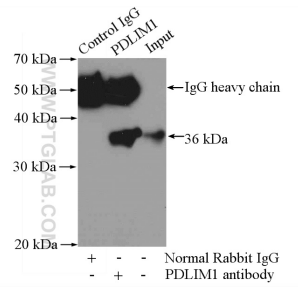
W: ptgcn.com

This product is exclusively available under Proteintech Group brand and is not available to purchase from any other manufacturer.

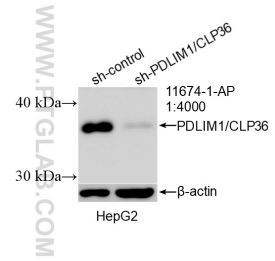
Selected Validation Data



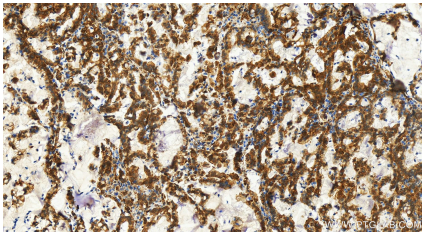
Various lysates were subjected to SDS PAGE followed by western blot with 11674-1-AP (PDLIM1/CLP36 antibody) at dilution of 1:3000 incubated at room temperature for 1.5 hours. This data was developed using the same antibody clone with 11674-1-PBS in a different storage buffer formulation.



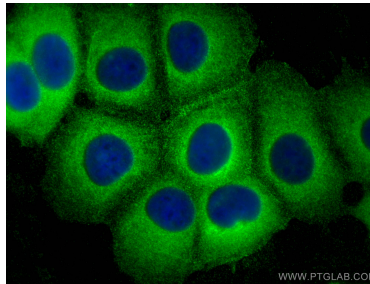
IP result of anti-PDLIM1/CLP36 (IP:11674-1-AP, 3ug; Detection:11674-1-AP 1:600) with mouse heart tissue lysate 4000ug. This data was developed using the same antibody clone with 11674-1-PBS in a different storage buffer formulation.



WB result of PDLIM1/CLP36 antibody (11674-1-AP; 1:4000; incubated at room temperature for 1.5 hours) with sh-Control and sh-PDLIM1/CLP36 transfected HepG2 cells. This data was developed using the same antibody clone with 11674-1-PBS in a different storage buffer formulation.



Immunohistochemical analysis of paraffin-embedded human stomach cancer tissue slide using 11674-1-AP (PDLIM1/CLP36 antibody) at dilution of 1:200 (under 20x lens). Heat mediated antigen retrieval with Tris-EDTA buffer (pH 9.0). This data was developed using the same antibody clone with 11674-1-PBS in a different storage buffer formulation.



Immunofluorescent analysis of (-20°C Methanol) fixed MCF-7 cells using PDLIM1/CLP36 antibody (11674-1-AP) at dilution of 1:400 and CoraLite® 488-Conjugated AffiniPure Goat Anti-Rabbit IgG(H+L). This data was developed using the same antibody clone with 11674-1-PBS in a different storage buffer formulation.