

For Research Use Only

WSB1 Polyclonal antibody

Catalog Number: 11666-1-AP **5 Publications**



Basic Information

Catalog Number: 11666-1-AP	GenBank Accession Number: BC021110	Purification Method: Antigen affinity purification
Size: 373 µg/ml	GeneID (NCBI): 26118	Recommended Dilutions: WB 1:1000-1:6000 IHC 1:50-1:500 IF 1:50-1:500
Source: Rabbit	UNIPROT ID: Q9Y6I7	
Isotype: IgG	Full Name: WD repeat and SOCS box-containing 1	
Immunogen Catalog Number: AG2211	Calculated MW: 421 aa, 47 kDa	
	Observed MW: 56 kDa	

Applications

Tested Applications: IF/ICC, IHC, WB, ELISA	Positive Controls: WB : COLO 320 cells, HepG2 cells, SMMC-7721 cells IHC : human prostate cancer tissue, IF : HepG2 cells,
Cited Applications: WB, IHC	
Species Specificity: human	
Cited Species: human	
Note-IHC: suggested antigen retrieval with TE buffer pH 9.0; (*) Alternatively, antigen retrieval may be performed with citrate buffer pH 6.0	

Background Information

WSB1 (or SWIP1) gene encodes WD repeat and SOCS box-containing protein 1, a member of the WD-protein subfamily. It contains several WD-repeats spanning most of the protein and an SOCS box in the C-terminus. Alternatively spliced transcript variants encoding 3 distinct isoforms have been found for this gene. WSB1 serves as a probable substrate-recognition component of a SCF-like ECS (Elongin-Cullin-SOCS-box protein) E3 ubiquitin ligase complex which mediates the ubiquitination and subsequent proteasomal degradation of target proteins. Ubiquitination and degradation of homeodomain-interacting protein kinase 2 by WSB1 has been reported (PMID: 15965468), initiated by the interaction of the two components (PMID: 18093972). WSB1 is also a part of an E3 ubiquitin ligase for the thyroid-hormone-activating type 2 iodothyronine deiodinase (D2) (PMID: 15965468).

Notable Publications

Author	Pubmed ID	Journal	Application
Ji Cao	26424695	Cancer Res	WB
Jung Jin Kim	26545811	Genes Dev	WB
Jung Jin Kim	27958289	Cell Res	WB

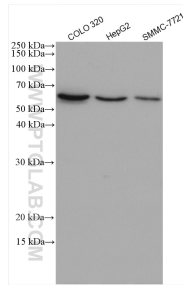
Storage

Storage:
Store at -20°C. Stable for one year after shipment.
Storage Buffer:
PBS with 0.02% sodium azide and 50% glycerol pH 7.3.
Aliquoting is unnecessary for -20°C storage

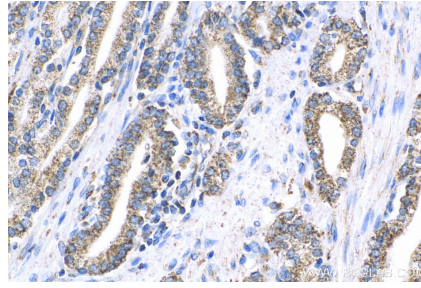
For technical support and original validation data for this product please contact:
T: 4006900926 E: Proteintech-CN@ptglab.com W: ptgcn.com

This product is exclusively available under Proteintech Group brand and is not available to purchase from any other manufacturer.

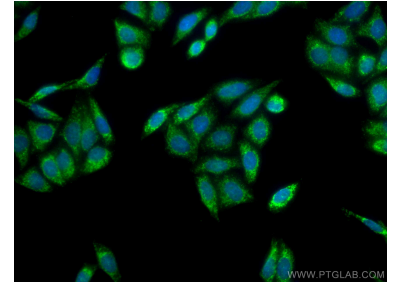
Selected Validation Data



Various lysates were subjected to SDS PAGE followed by western blot with 11666-1-AP (WSB1 antibody) at dilution of 1:3000 incubated at room temperature for 1.5 hours.



Immunohistochemical analysis of paraffin-embedded human prostate cancer tissue slide using 11666-1-AP (WSB1 antibody) at dilution of 1:200 (under 40x lens). Heat mediated antigen retrieval with Tris-EDTA buffer (pH 9.0).



Immunofluorescent analysis of (4% PFA) fixed HepG2 cells using WSB1 antibody (11666-1-AP) at dilution of 1:200 and CoraLite®488-Conjugated AffiniPure Goat Anti-Rabbit IgG(H+L).