

For Research Use Only

MALT1 Polyclonal antibody

Catalog Number: 11660-1-AP

Featured Product

9 Publications



Basic Information

Catalog Number:

11660-1-AP

Size:

400 ug/ml

Source:

Rabbit

Isotype:

IgG

Immunogen Catalog Number:

AG2182

GenBank Accession Number:

BC030143

GeneID (NCBI):

10892

UNIPROT ID:

Q9UDY8

Full Name:

mucosa associated lymphoid tissue
lymphoma translocation gene 1

Calculated MW:

824 aa, 92 kDa

Observed MW:

92-100 kDa

Purification Method:

Antigen affinity purification

Recommended Dilutions:

WB 1:500-1:1000

IHC 1:20-1:200

IF/ICC 1:200-1:800

Applications

Tested Applications:

WB, IHC, IF/ICC, ELISA

Cited Applications:

WB, IHC, IF, IP, CoIP

Species Specificity:

human, mouse, rat

Cited Species:

human, mouse, rat

**Note-IHC: suggested antigen retrieval with
TE buffer pH 9.0; (*) Alternatively, antigen
retrieval may be performed with citrate
buffer pH 6.0**

Positive Controls:

WB : HeLa cells, HEK-293 cells, mouse testis tissue

IHC : human lymphoma tissue,

IF/ICC : HepG2 cells,

Background Information

Mucosa-associated lymphoid tissue lymphoma translocation protein 1 belongs to caspase-like protein superfamily. MALT1 plays a potential role in the regulation of apoptosis and induces NFκB activation and required for the normal development of B cells and for the activation of the IKK complex. It acts as a caspase and mediates additional functions related to T cell activation, cleaving both the ubiquitin editing enzyme, TNFAIP3, and the C terminus of BCL10. It has two isoforms. Researches showed that inhibition of MALT1 blocks A20 and BCL10 cleavage, reduces NFκB activity, and decreases the expression of NFκB targets BCLXL.

Notable Publications

Author	Pubmed ID	Journal	Application
Zhenglin Chang	35246671	Food Funct	IHC
Ke-Hung Tsui	33802402	Biomedicines	IHC
Zi-Mei Peng	36603698	Arch Biochem Biophys	WB

Storage

Storage:

Store at -20°C. Stable for one year after shipment.

Storage Buffer:

PBS with 0.02% sodium azide and 50% glycerol pH 7.3.

Aliquoting is unnecessary for -20°C storage

For technical support and original validation data for this product please contact:

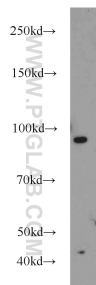
T: 4006900926

E: Proteintech-CN@ptglab.com

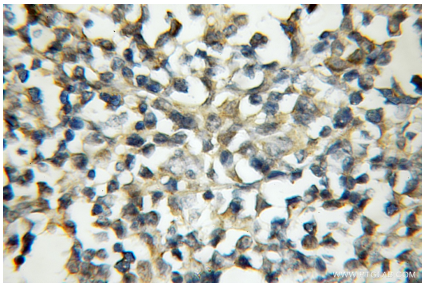
W: ptgcn.com

This product is exclusively available under Proteintech Group brand and is not available to purchase from any other manufacturer.

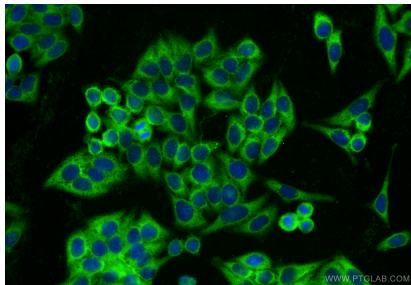
Selected Validation Data



HeLa cells were subjected to SDS PAGE followed by western blot with 11660-1-AP (MALT1 antibody) at dilution of 1:600 incubated at room temperature for 1.5 hours.



Immunohistochemical analysis of paraffin-embedded human lymphoma using 11660-1-AP (MALT1 antibody) at dilution of 1:50 (under 10x lens).



Immunofluorescent analysis of (-20°C Ethanol) fixed HepG2 cells using MALT1 antibody (11660-1-AP) at dilution of 1:400 and CoraLite®488-Conjugated Goat Anti-Rabbit IgG(H+L) (SA00013-2).