

For Research Use Only

# CPI17 Polyclonal antibody

Catalog Number: 11658-1-AP



## Basic Information

Catalog Number:

11658-1-AP

Size:

133 µg/ml

Source:

Rabbit

Isotype:

IgG

Immunogen Catalog Number:

AG2237

GenBank Accession Number:

BC021089

GeneID (NCBI):

94274

UNIPROT ID:

Q96A00

Full Name:

protein phosphatase 1, regulatory  
(inhibitor) subunit 14A

Calculated MW:

147 aa, 17 kDa

Observed MW:

17 kDa

Purification Method:

Antigen affinity purification

Recommended Dilutions:

WB 1:200-1:1000

IF 1:10-1:100

## Applications

Tested Applications:

IF/ICC, WB, ELISA

Species Specificity:

human

Positive Controls:

WB : MCF-7 cells, HeLa cells, HepG2 cells, human colon  
tissue, Jurkat cells, PC-3 cells

IF : PC-3 cells,

## Background Information

PPP1R14A, also named as CPI17, belongs to the protein phosphatase 1 (PP1) inhibitor family. This protein is an inhibitor of smooth muscle myosin phosphatase, and has higher inhibitory activity when phosphorylated. Inhibition of myosin phosphatase leads to increased myosin phosphorylation and enhanced smooth muscle contraction. CPI17 has two isoforms: CPI-17alpha (17 kDa) and CPI-17beta (13 kDa).

## Storage

Storage:

Store at -20°C. Stable for one year after shipment.

Storage Buffer:

PBS with 0.02% sodium azide and 50% glycerol pH 7.3.

Aliquoting is unnecessary for -20°C storage

For technical support and original validation data for this product please contact:

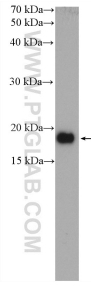
T: 4006900926

E: [Proteintech-CN@ptglab.com](mailto:Proteintech-CN@ptglab.com)

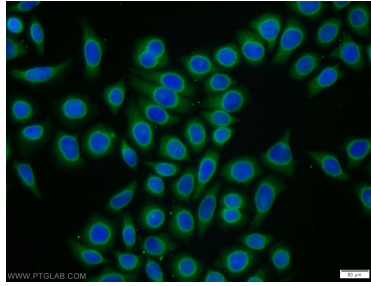
W: [ptgcn.com](http://ptgcn.com)

This product is exclusively available under Proteintech Group brand and is not available to purchase from any other manufacturer.

## Selected Validation Data



MCF-7 cells were subjected to SDS PAGE followed by western blot with 11658-1-AP (CPI17 antibody) at dilution of 1:300 incubated at room temperature for 1.5 hours.



Immunofluorescent analysis of PC-3 cells using 11658-1-AP (CPI17 antibody) at dilution of 1:25 and Alexa Fluor 488-conjugated AffiniPure Goat Anti-Rabbit IgG(H+L).