

For Research Use Only

# MCHR1 Polyclonal antibody

Catalog Number: 11656-2-AP



## Basic Information

Catalog Number:

11656-2-AP

Size:

350 µg/ml

Source:

Rabbit

Isotype:

IgG

Immunogen Catalog Number:

AG2224

GenBank Accession Number:

BC021146

GeneID (NCBI):

2847

UNIPROT ID:

Q99705

Full Name:

melanin-concentrating hormone  
receptor 1

Calculated MW:

422 aa, 46 kDa

Observed MW:

46 kDa

Purification Method:

Antigen affinity purification

Recommended Dilutions:

WB 1:500-1:2000

IHC 1:200-1:800

## Applications

Tested Applications:

WB, IHC, ELISA

Species Specificity:

human, mouse, rat

**Note-IHC: suggested antigen retrieval with  
TE buffer pH 9.0; (\*) Alternatively, antigen  
retrieval may be performed with citrate  
buffer pH 6.0**

Positive Controls:

WB : SH-SY5Y cells,

IHC : mouse heart tissue, human brain tissue, mouse  
brain tissue

## Background Information

### Storage

Storage:

Store at -20°C. Stable for one year after shipment.

Storage Buffer:

PBS with 0.02% sodium azide and 50% glycerol pH 7.3.

Aliquoting is unnecessary for -20°C storage

For technical support and original validation data for this product please contact:

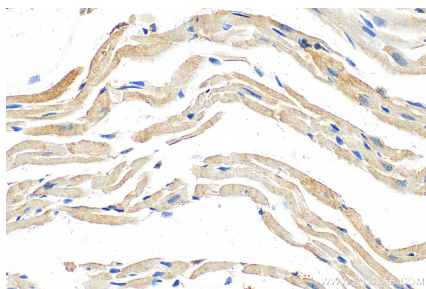
T: 4006900926

E: [Proteintech-CN@ptglab.com](mailto:Proteintech-CN@ptglab.com)

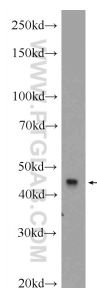
W: [ptgcn.com](http://ptgcn.com)

This product is exclusively available under Proteintech Group brand and is not available to purchase from any other manufacturer.

## Selected Validation Data



Immunohistochemical analysis of paraffin-embedded mouse heart tissue slide using 11656-2-AP (MCHR1 antibody) at dilution of 1:400 (under 40x lens). Heat mediated antigen retrieval with Tris-EDTA buffer (pH 9.0).



SH-SY5Y cells were subjected to SDS PAGE followed by western blot with 11656-2-AP (MCHR1 Antibody) at dilution of 1:1000 incubated at room temperature for 1.5 hours.