

For Research Use Only

EIF1AX Polyclonal antibody

Catalog Number: 11649-2-AP 1 Publications



Basic Information

Catalog Number: 11649-2-AP	GenBank Accession Number: BC000793	Purification Method: Antigen affinity purification
Size: 147 µg/ml	GeneID (NCBI): 1964	Recommended Dilutions: WB 1:500-1:1000 IHC 1:20-1:200 IF 1:200-1:800
Source: Rabbit	UNIPROT ID: P47813	
Isotype: IgG	Full Name: eukaryotic translation initiation factor 1A, X-linked	
Immunogen Catalog Number: AG2248	Calculated MW: 16 kDa	
	Observed MW: 16 kDa	

Applications

Tested Applications: IF/ICC, IHC, WB, ELISA	Positive Controls:
Cited Applications: WB, IHC	WB: A375 cells, HeLa cells, HEK-293T cells, Jurkat cells
Species Specificity: human, mouse, rat	IHC: human gliomas tissue,
Cited Species: human	IF: HeLa cells,
Note-IHC: suggested antigen retrieval with TE buffer pH 9.0; (*) Alternatively, antigen retrieval may be performed with citrate buffer pH 6.0	

Background Information

Eukaryotic translation initiation factor 1A, X-chromosome(EIF1AX), designated as to distinguish from the Y-linked homolog, has an unblocked N-terminal proline, which was consistent with the general pattern of eukaryotic protein. It's may be required for maximal rate of protein biosynthesis. Like EIF4C, it enhances ribosome dissociation into subunits and stabilizes the binding of the initiator Met-tRNA(I) to 40S ribosomal subunits.

Notable Publications

Author	Pubmed ID	Journal	Application
Yuhuan Li	32926483	Cell Prolif	WB,IHC

Storage

Storage:
Store at -20°C. Stable for one year after shipment.
Storage Buffer:
PBS with 0.02% sodium azide and 50% glycerol pH 7.3.
Aliquoting is unnecessary for -20°C storage

For technical support and original validation data for this product please contact:

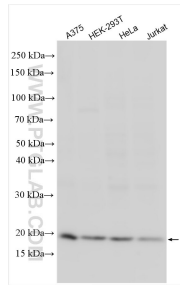
T: 4006900926

E: Proteintech-CN@ptglab.com

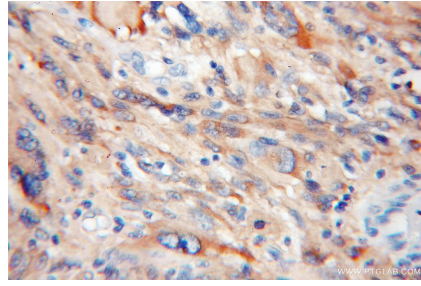
W: ptgcn.com

This product is exclusively available under Proteintech Group brand and is not available to purchase from any other manufacturer.

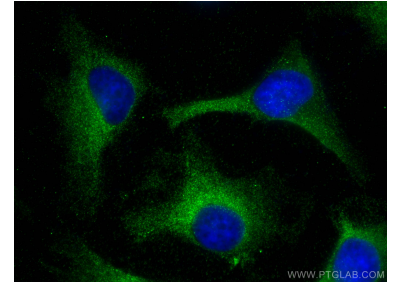
Selected Validation Data



Various lysates were subjected to SDS PAGE followed by western blot with 11649-2-AP (EIF1AX antibody) at dilution of 1:500 incubated at room temperature for 1.5 hours.



Immunohistochemical analysis of paraffin-embedded human gliomas using 11649-2-AP (EIF1AX antibody) at dilution of 1:50 (under 10x lens).



Immunofluorescent analysis of (-20°C Methanol) fixed HeLa cells using EIF1AX antibody (11649-2-AP) at dilution of 1:400 and CoraLite®488-Conjugated AffiniPure Goat Anti-Rabbit IgG(H+L).