

For Research Use Only

NPLOC4 Polyclonal antibody

Catalog Number: 11638-1-AP

Featured Product

10 Publications



Basic Information

Catalog Number:

11638-1-AP

Size:

200 µg/ml

Source:

Rabbit

Isotype:

IgG

Immunogen Catalog Number:

AG2219

GenBank Accession Number:

BC025930

GeneID (NCBI):

55666

UNIPROT ID:

Q8TAT6

Full Name:

nuclear protein localization 4 homolog (S. cerevisiae)

Calculated MW:

608 aa, 68 kDa

Observed MW:

68 kDa

Purification Method:

Antigen affinity purification

Recommended Dilutions:

WB 1:500-1:1000

IP 0.5-4.0 µg for 1.0-3.0 mg of total protein lysate

IHC 1:20-1:200

Applications

Tested Applications:

IHC, IP, WB, ELISA

Cited Applications:

WB, IP, IF

Species Specificity:

human, mouse, rat

Cited Species:

human, mouse

Note-IHC: suggested antigen retrieval with TE buffer pH 9.0; (*) Alternatively, antigen retrieval may be performed with citrate buffer pH 6.0

Positive Controls:

WB: mouse kidney tissue, mouse heart tissue, rat heart tissue

IP: mouse kidney tissue,

IHC: human kidney tissue,

Background Information

Notable Publications

Author	Pubmed ID	Journal	Application
Yalcin Erzurumlu	36445513	Mol Biol Rep	WB
Tao Wang	27226613	J Biol Chem	WB
Youngdae Gwon	34739333	Science	IP

Storage

Storage:

Store at -20°C. Stable for one year after shipment.

Storage Buffer:

PBS with 0.02% sodium azide and 50% glycerol pH 7.3.

Aliquoting is unnecessary for -20°C storage

For technical support and original validation data for this product please contact:

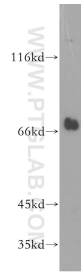
T: 4006900926

E: Proteintech-CN@ptglab.com

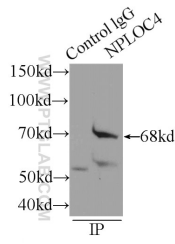
W: ptgcn.com

This product is exclusively available under Proteintech Group brand and is not available to purchase from any other manufacturer.

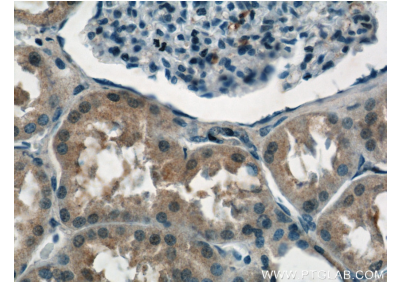
Selected Validation Data



mouse kidney tissue were subjected to SDS PAGE followed by western blot with 11638-1-AP (NPLOC4 antibody) at dilution of 1:200 incubated at room temperature for 1.5 hours.



IP result of anti-NPLOC4 (IP:11638-1-AP, 4ug; Detection:11638-1-AP 1:600) with mouse kidney tissue lysate 6000ug.



Immunohistochemical analysis of paraffin-embedded human kidney tissue slide using 11638-1-AP (NPLOC4 Antibody) at dilution of 1:50 (under 40x lens).