

For Research Use Only

# EPSTI1 Polyclonal antibody

Catalog Number: 11627-1-AP

Featured Product

5 Publications



## Basic Information

Catalog Number:

11627-1-AP

Size:

350 ug/ml

Source:

Rabbit

Isotype:

IgG

Immunogen Catalog Number:

AG2157

GenBank Accession Number:

BC023660

GeneID (NCBI):

94240

UNIPROT ID:

Q96J88

Full Name:

epithelial stromal interaction 1 (breast)

Calculated MW:

410 aa, 47 kDa

Observed MW:

35-38 kDa

Purification Method:

Antigen affinity purification

Recommended Dilutions:

WB 1:1000-1:6000

IHC 1:20-1:200

## Applications

Tested Applications:

WB, IHC, ELISA

Cited Applications:

WB, IHC, IF

Species Specificity:

human, mouse

Cited Species:

human, mouse

**Note-IHC: suggested antigen retrieval with TE buffer pH 9.0; (\*) Alternatively, antigen retrieval may be performed with citrate buffer pH 6.0**

Positive Controls:

WB : HUVEC cells, mouse spleen tissue

IHC : human breast cancer tissue, human kidney tissue

## Background Information

Real-time PCR revealed the highest expression in the placenta; strong expression in the small intestine, spleen, salivary gland, and testes; and low expression levels in normal breast and several other tissues. The expression of EPSTI1 was upregulated (range 5.6-72.1) in all 14 breast carcinomas tested. Microdissection revealed that both tumor and stromal tissue overexpressed EPSTI1. (PubMed: 11991720)

## Notable Publications

Author	Pubmed ID	Journal	Application
Chaitra Rao	33970103	Elife	WB
Yan-Rou Bei	35778487	Acta Pharmacol Sin	WB,IHC,IF
Erfei Chen	30572883	Mol Cancer	WB

## Storage

Storage:

Store at -20°C. Stable for one year after shipment.

Storage Buffer:

PBS with 0.02% sodium azide and 50% glycerol pH 7.3.

Aliquoting is unnecessary for -20°C storage

For technical support and original validation data for this product please contact:

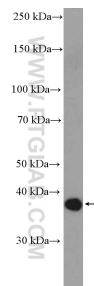
T: 4006900926

E: [Proteintech-CN@ptglab.com](mailto:Proteintech-CN@ptglab.com)

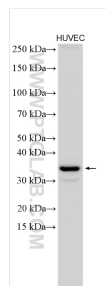
W: [ptgcn.com](http://ptgcn.com)

This product is exclusively available under Proteintech Group brand and is not available to purchase from any other manufacturer.

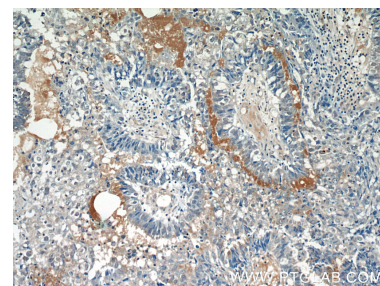
## Selected Validation Data



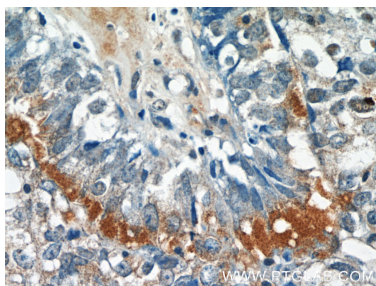
mouse spleen tissue was subjected to SDS PAGE followed by western blot with 11627-1-AP (EPSTI1 antibody) at dilution of 1:1000 incubated at room temperature for 1.5 hours.



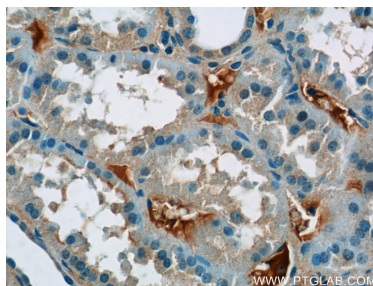
HUVEC cells were subjected to SDS PAGE followed by western blot with 11627-1-AP (EPSTI1 antibody) at dilution of 1:3000 incubated at room temperature for 1.5 hours.



Immunohistochemical analysis of paraffin-embedded human breast cancer tissue slide using 11627-1-AP (EPSTI1 Antibody) at dilution of 1:50 (under 10x lens).



Immunohistochemical analysis of paraffin-embedded human breast cancer tissue slide using 11627-1-AP (EPSTI1 Antibody) at dilution of 1:50 (under 40x lens).



Immunohistochemical analysis of paraffin-embedded human kidney tissue slide using 11627-1-AP (EPSTI1 Antibody) at dilution of 1:50 (under 40x lens).