

ENTPD6 Polyclonal antibody

Catalog Number: 11626-1-AP

Basic Information

Catalog Number:

11626-1-AP

Size:

273 µg/ml

Source:

Rabbit

Isotype:

IgG

Immunogen Catalog Number:

AG2148

GenBank Accession Number:

BC025980

GeneID (NCBI):

955

UNIPROT ID:

O75354

Full Name:

ectonucleoside triphosphate
diphosphohydrolase 6 (putative
function)

Calculated MW:

483 aa, 53 kDa

Observed MW:

60 kDa

Purification Method:

Antigen affinity purification

Recommended Dilutions:

WB 1:500-1:1000

IHC 1:20-1:200

Applications

Tested Applications:

IHC, WB, ELISA

Species Specificity:

human, mouse

**Note-IHC: suggested antigen retrieval with
TE buffer pH 9.0; (*) Alternatively, antigen
retrieval may be performed with citrate
buffer pH 6.0**

Positive Controls:

WB : mouse spleen tissue,

IHC : human prostate cancer tissue,

Background Information

Storage

Storage:

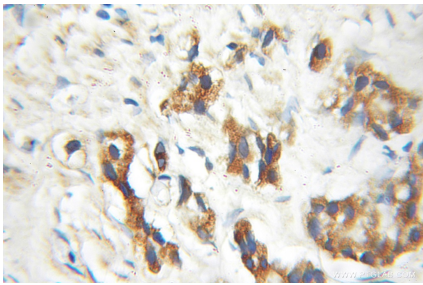
Store at -20°C. Stable for one year after shipment.

Storage Buffer:

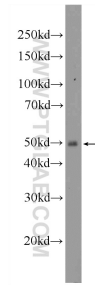
PBS with 0.02% sodium azide and 50% glycerol pH 7.3.

Aliquoting is unnecessary for -20°C storage

Selected Validation Data



Immunohistochemical analysis of paraffin-embedded human prostate cancer using 11626-1-AP (ENTPD6 antibody) at dilution of 1:100 (under 10x lens).



mouse spleen tissue were subjected to SDS PAGE followed by western blot with 11626-1-AP (ENTPD6 Antibody) at dilution of 1:600 incubated at room temperature for 1.5 hours.