

For Research Use Only

DOCK8 Polyclonal antibody

Catalog Number: 11622-1-AP

Featured Product

8 Publications



Basic Information

Catalog Number:

11622-1-AP

Size:

500 µg/ml

Source:

Rabbit

Isotype:

IgG

Immunogen Catalog Number:

AG2040

GenBank Accession Number:

BC019102

GeneID (NCBI):

81704

UNIPROT ID:

Q8NF50

Full Name:

dedicator of cytokinesis 8

Calculated MW:

2031 aa, 231 kDa

Observed MW:

230-239 kDa

Purification Method:

Antigen affinity purification

Recommended Dilutions:

WB 1:500-1:1000

IHC 1:20-1:200

Applications

Tested Applications:

WB, IHC, ELISA

Cited Applications:

WB, IF, IP

Species Specificity:

human, mouse, rat

Cited Species:

human, mouse

Note-IHC: suggested antigen retrieval with TE buffer pH 9.0; (*) Alternatively, antigen retrieval may be performed with citrate buffer pH 6.0

Positive Controls:

WB: Raji cells, rat lung tissue, THP-1 cells

IHC: human kidney tissue, human heart tissue, mouse kidney tissue, mouse lung tissue

Background Information

DOCK8 is a member of the DOCK family of proteins, which have a unique DRH2 domain enabling them to act as GEFs and so controlling a range of cellular processes in various signaling pathways (PMID: 12432077). The specific target of DOCK8 is Cell division control protein 42 homolog (Cdc42), a small GTPase that is involved in regulation of the cell cycle and forms a complex. DOCK8 also acts as a scaffold molecule in this complex that initiates actin polymerization via the Wiskott-Aldrich Syndrome protein (WASP) (PubMed: 28028151, PubMed: 22461490).

Notable Publications

Author	Pubmed ID	Journal	Application
Rui Martins	27798618	Nat Immunol	WB
Shi-Jie Wang	25428919	Oncotarget	WB, IF, IP
Hua Qu	33627322	Diabetes	WB

Storage

Storage:

Store at -20°C. Stable for one year after shipment.

Storage Buffer:

PBS with 0.02% sodium azide and 50% glycerol pH 7.3.

Aliquoting is unnecessary for -20°C storage

For technical support and original validation data for this product please contact:

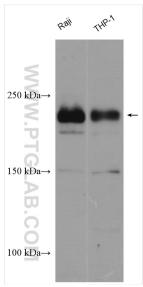
T: 4006900926

E: Proteintech-CN@ptglab.com

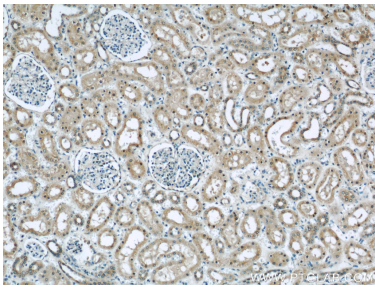
W: ptgcn.com

This product is exclusively available under Proteintech Group brand and is not available to purchase from any other manufacturer.

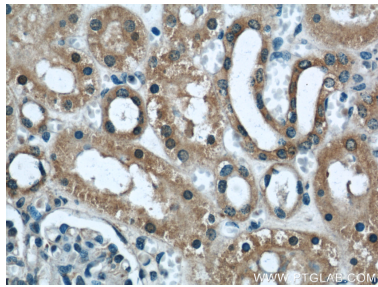
Selected Validation Data



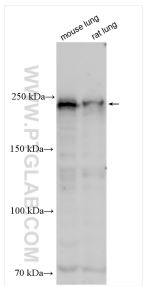
Various lysates were subjected to SDS PAGE followed by western blot with 11622-1-AP (DOCK8 antibody) at dilution of 1:500 incubated at room temperature for 1.5 hours.



Immunohistochemical analysis of paraffin-embedded human kidney using 11622-1-AP (DOCK8 antibody) at dilution of 1:50 (under 10x lens).



Immunohistochemical analysis of paraffin-embedded human kidney using 11622-1-AP (DOCK8 antibody) at dilution of 1:50 (under 40x lens).



Various lysates were subjected to SDS PAGE followed by western blot with 11622-1-AP (DOCK8 antibody) at dilution of 1:1000 incubated at room temperature for 1.5 hours.