

For Research Use Only

# BCL11A Polyclonal antibody, PBS Only

Catalog Number:11613-1-PBS



## Basic Information

<b>Catalog Number:</b> 11613-1-PBS	<b>GenBank Accession Number:</b> BC021098	<b>Purification Method:</b> Antigen affinity purification
<b>Source:</b> Rabbit	<b>GeneID (NCBI):</b> 53335	
<b>Isotype:</b> IgG	<b>UNIPROT ID:</b> Q9H165	
<b>Immunogen Catalog Number:</b> AG2187	<b>Full Name:</b> B-cell CLL/lymphoma 11A (zinc finger protein)	
	<b>Calculated MW:</b> 835 aa, 91 kDa	

## Applications

**Tested Applications:**  
WB, IHC, Indirect ELISA

**Species Specificity:**  
human, mouse, rat

## Background Information

B-CELL CLL/LYMPHOMA 11A(BCL11A)is a highly conserved zinc finger gene. It acts as a myeloid and B-cell proto-oncogene, and may play key roles in leukemogenesis and hematopoiesis. It is an essential factor in lymphopoiesis, and required for B-cell formation in fetal liver. May function as a modulator of the transcriptional repression activity of ARP1. It is also involved in lymphoid malignancies through translocation or amplification events. It has recently been shown that BCL11A expression is inversely correlated with  $\gamma$  globin expression.(PMID:21156846). This is a rabbit polyclonal antibody raised against part chain of N-terminal BCL11A of human origin. There are three isoforms of BCL11A: isoform1(773aa), isoform2(486aa) and isoform3(239aa)

## Storage

**Storage:**  
Store at -80°C.  
**The product is shipped with ice packs. Upon receipt, store it immediately at -80°C**

**Storage Buffer:**  
PBS only, pH7.3

For technical support and original validation data for this product please contact:

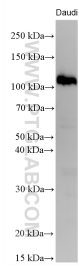
T: 4006900926

E: Proteintech-CN@ptglab.com

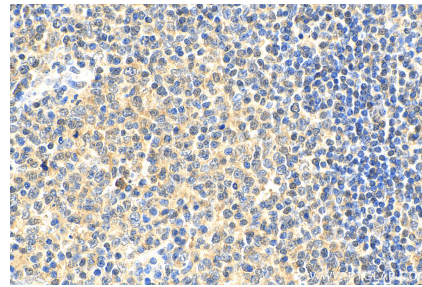
W: ptgcn.com

**This product is exclusively available under Proteintech Group brand and is not available to purchase from any other manufacturer.**

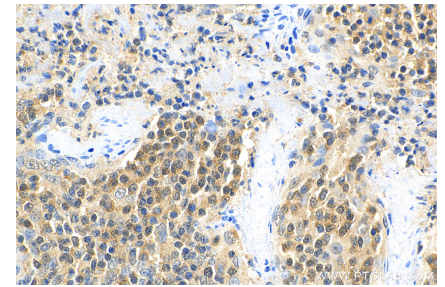
## Selected Validation Data



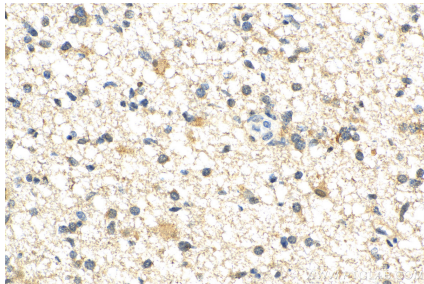
Various lysates were subjected to SDS PAGE followed by western blot with 11613-1-AP (BCL11A antibody) at dilution of 1:4000 incubated at room temperature for 1.5 hours. This data was developed using the same antibody clone with 11613-1-PBS in a different storage buffer formulation.



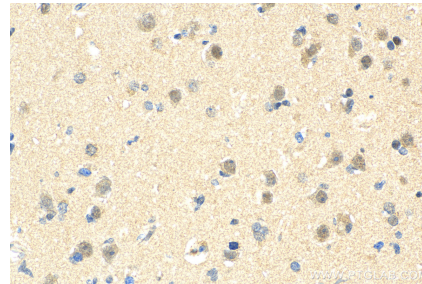
Immunohistochemical analysis of paraffin-embedded human tonsillitis tissue slide using 11613-1-AP (BCL11A antibody) at dilution of 1:200 (under 10x lens). Heat mediated antigen retrieval with Tris-EDTA buffer (pH 9.0). This data was developed using the same antibody clone with 11613-1-PBS in a different storage buffer formulation.



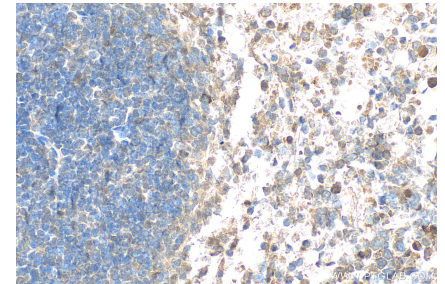
Immunohistochemical analysis of paraffin-embedded human tonsillitis tissue slide using 11613-1-AP (BCL11A antibody) at dilution of 1:200 (under 40x lens). Heat mediated antigen retrieval with Tris-EDTA buffer (pH 9.0). This data was developed using the same antibody clone with 11613-1-PBS in a different storage buffer formulation.



Immunohistochemical analysis of paraffin-embedded human gliomas tissue slide using 11613-1-AP (BCL11A antibody) at dilution of 1:200 (under 40x lens). Heat mediated antigen retrieval with Tris-EDTA buffer (pH 9.0). This data was developed using the same antibody clone with 11613-1-PBS in a different storage buffer formulation.



Immunohistochemical analysis of paraffin-embedded human gliomas tissue slide using 11613-1-AP (BCL11A antibody) at dilution of 1:200 (under 10x lens). Heat mediated antigen retrieval with Tris-EDTA buffer (pH 9.0). This data was developed using the same antibody clone with 11613-1-PBS in a different storage buffer formulation.



Immunohistochemical analysis of paraffin-embedded mouse spleen tissue slide using 11613-1-AP (BCL11A antibody) at dilution of 1:200 (under 40x lens). Heat mediated antigen retrieval with Tris-EDTA buffer (pH 9.0). This data was developed using the same antibody clone with 11613-1-PBS in a different storage buffer formulation.